



September 6, 2021

Trading Commentary

I entered the week without a position – a truly rare event for me. I remained flat for most of the week, but established a few positions on Friday. Will these positions end a choppy streak for my trading? No idea. My job as a trader is to manage the following simple process:

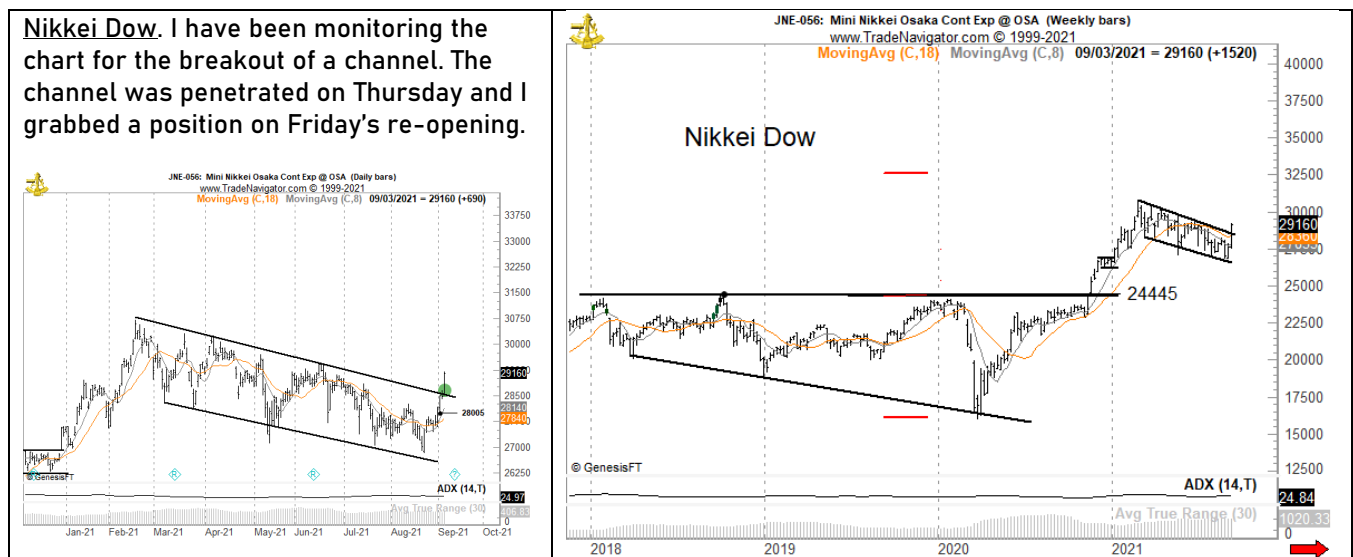
- See a qualifying pattern
- Take a trade with an established maximum risk
- Follow set rules/guidelines in the management of trades
- Live with the results
- Trust that over an extended number of trades a profit will be produced

The hardest part of trading is to keep it simple.

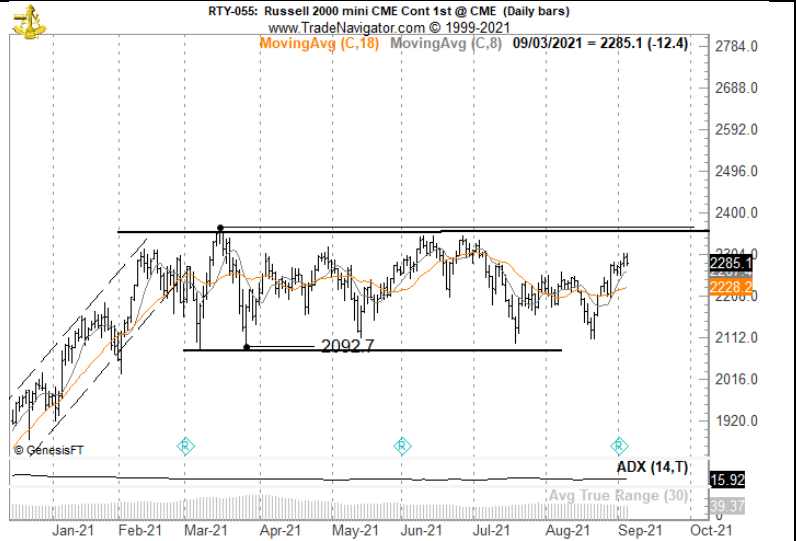
Markets

I am experimenting with a new format this week. Let me know via email if it is a format that works better for you. The first section will comment on all Beginning Trades and symbols on the Starting Radar list for pending New Initial Positions. The second section will comment on all the markets added during the week plus any new symbols being added for the new week.

Beginning Trades and Radar List for NIPs



Russell. Nothing done. Remains on list.
Rectangle pattern.



Corn. Unable. Remains on list with a bias
to be long. Symmetrical triangle.



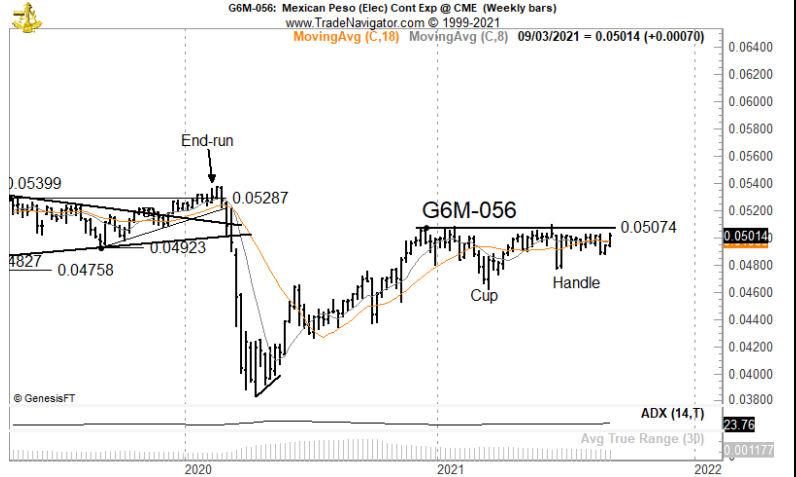
Canadian Rapeseed. Unable. Remains on
list. Symmetrical triangle.



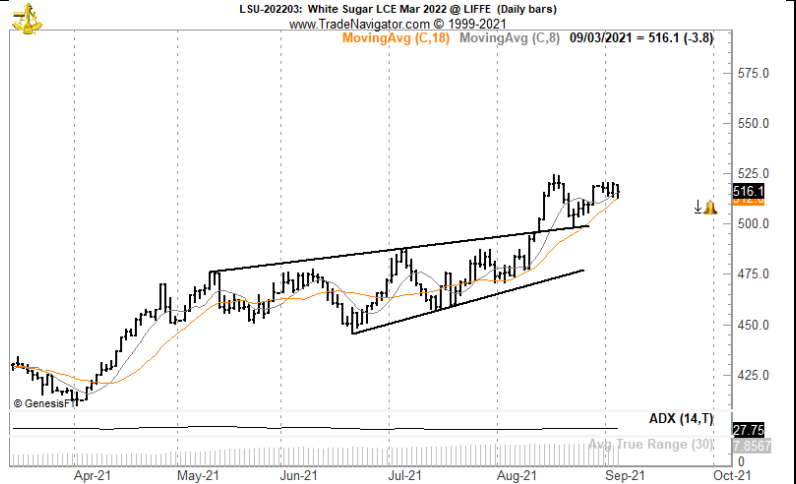
DBA. Unable. Remains on list. Complex inverted continuation H&S.



Mexican Peso futures. Unable. Remains on list. Cup and Handle.



London Sugar Unable. I will continue to try to buy a slight correction. Running wedge has been completed.



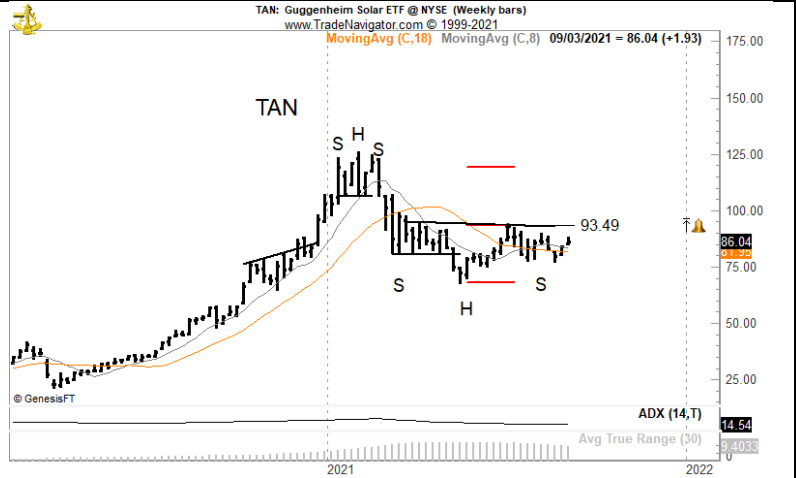
ARKK. Unable. Remains on list. Inverted continuation H&S.



AVGO. I pulled my buy stop this past week because of the pending earnings report. I bought a small (25%) position on Friday and carried a loss home. Complex Cup and Handle.

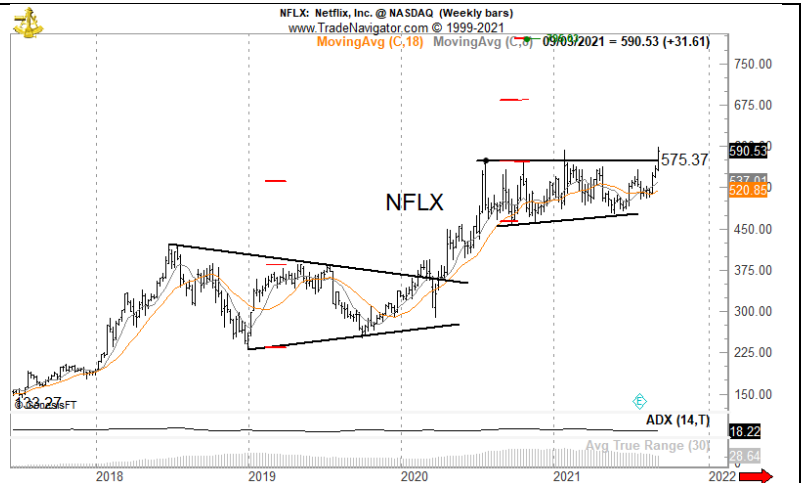


TAN. Nothing done. Remains on the list. Inverted H&S.

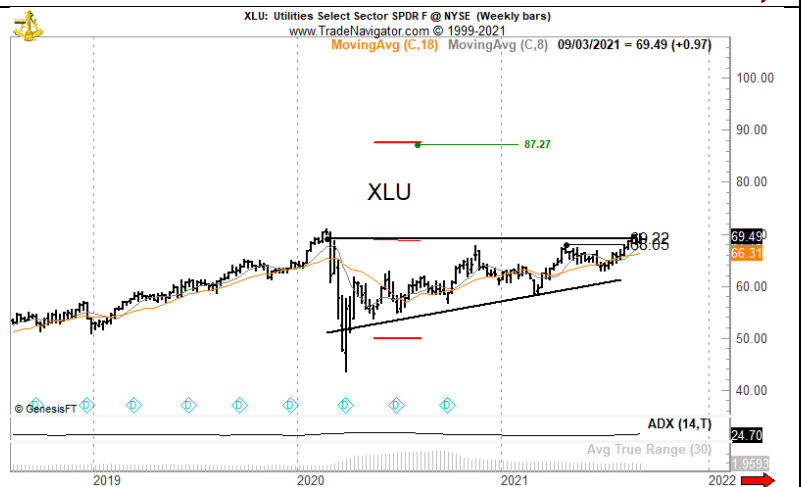


Markets/symbols added during the week

Netflix. A breakout occurred on Wednesday. A 50% long position was established on Friday. Ascending triangle.



XLU. My buy stops were almost hit this past week. This pattern is belabored.



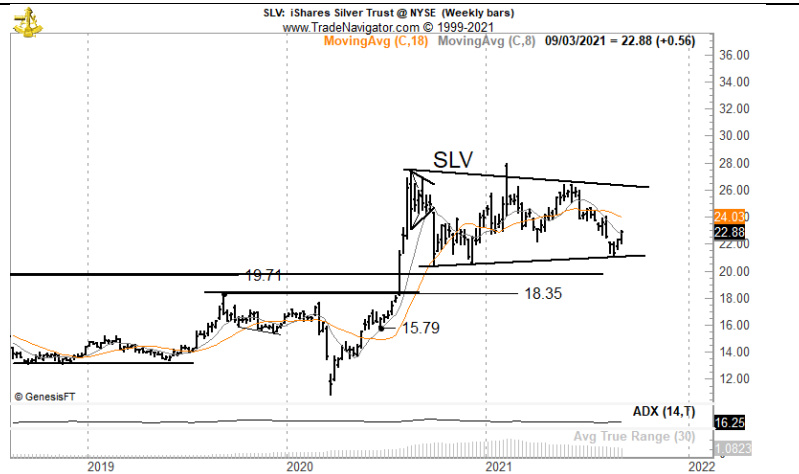
USD/TRY. It is difficult for me to imagine being short USD/long TRY. Yet, price does not lie. Head and shoulders top.



Dec Lean Hogs. Symmetrical triangles are the least favorite patterns I will trade, and then seldom with a full position.



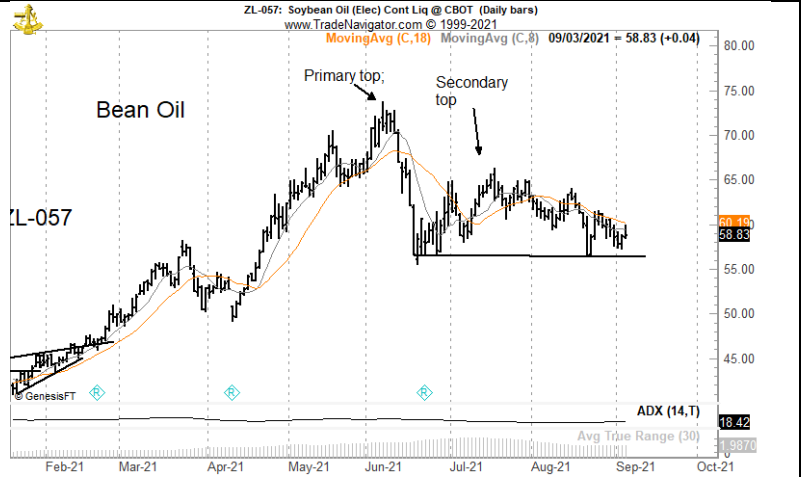
Silver. I have commented recently on the possibility a final low was forming for a massive rectangle. I bought a 100% position on Friday in the ETF with the idea it will provide me with more staying power than offered by a futures position. Rectangle.



Soybean Meal. A descending triangle was completed on Wednesday. I placed an order to sell a retest and was unable. I will not place the order next week.




Soybean Oil. Continuation rounding pattern. I was almost filled on a limit order on Friday in the Dec contract.



Tracking sheet for the week of Aug 29, ending Sep 3

			Weekly position/symbol tracking - Prop ONLY	
W/O Aug 29				
Starting trade	Starting positions	Starting radar list	Symbols / orders added during week	Actions, End of week position
None				
		N225Z21	Nikkei Dow	B 100% JNEZ21 F 28355, long 100%
		RTYZ21	Russell 2000	Unable
		CORN (ETF)		Unable
		RSX21	Canadian Rapeseed	Unable
		DBA		Unable
		G6M21	Mex Peso futures	Unable
		LSUH22	London Sugar	Unable
		ARKK		Unable
		AVGO		B 25% F 500.21, long 25%
		TAN		Unable
			NFLX	B 50% F 585.17
			XLU	Unable
			USD/TRY	Unable
			HEZ21	Unable
			SIZ21/SLV	B 100% SLV F 22.62, long 100%
			ZLZ21	Unable
			ZMZ21	Unable

Tracking sheet for the week of Sep 6

			Weekly position/symbol tracking - Prop ONLY	
W/O Sep 6				
Beginning Trades	Beginning Positions	Starting radar list for New Initial Positions	Symbols / orders added during week	Actions, End of week position
AVGO	L 25%			
NFLX	L 50%			
NKZ21	L 100%		Nikkei Dow	
SLV	100%		Silver ETF	
		ARKK		
		CORN (ETF)		
		DBA		
		G6M21	Mex Peso futures	
		HEZ21	Dec Lean Hogs	
		LSUH22	Mar London Sugar	
		RSX21	Canadian Rapeseed	
		RTYZ21	Russell 2000	
		TAN		
		USD/TRY		
		XLU		
		ZLZ21	Dec Bean Oil	

plb

end