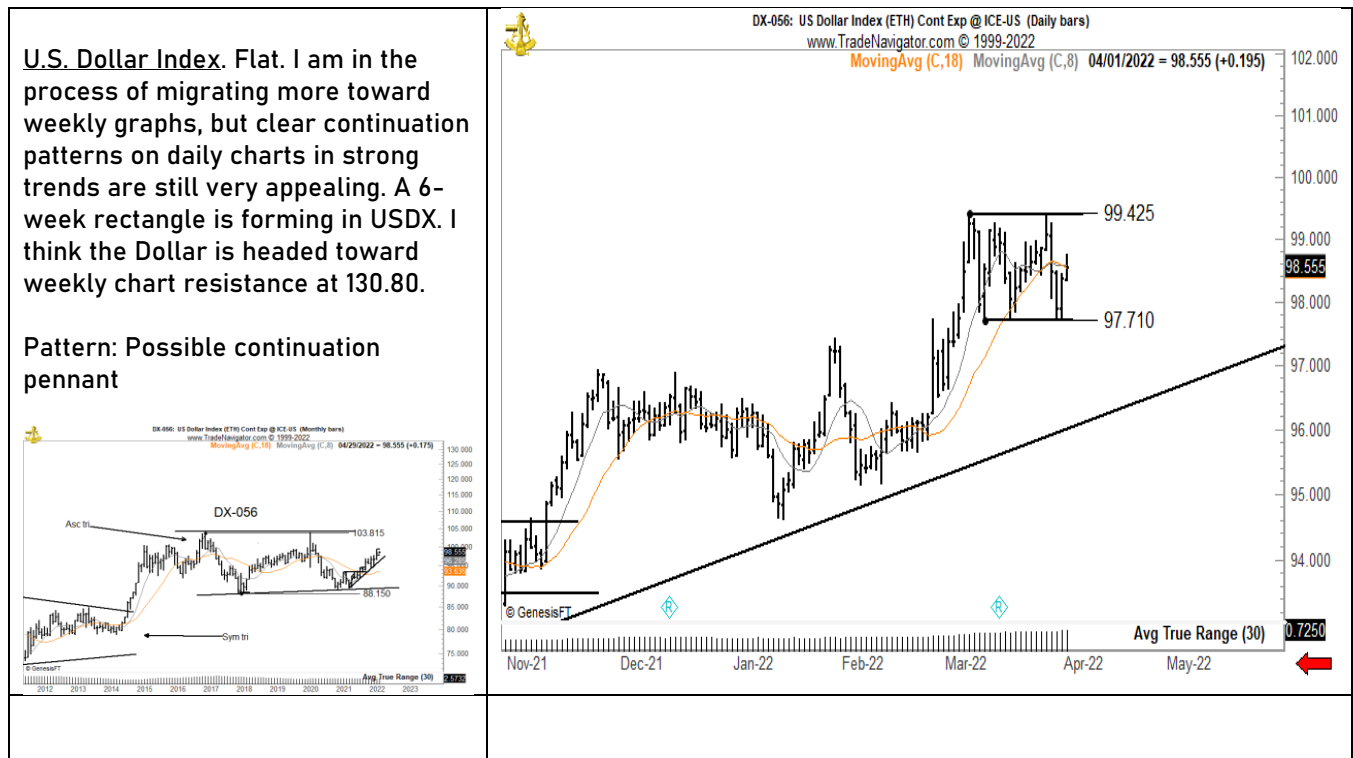




April 3, 2022

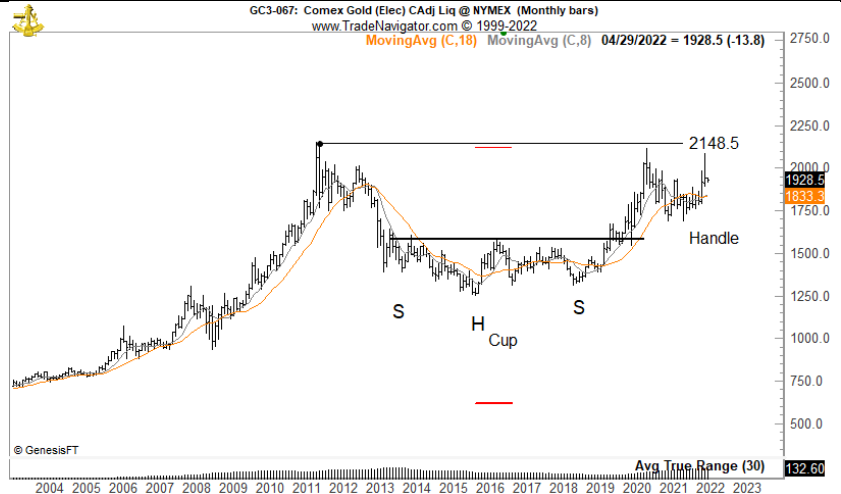
Markets of interest for a new position

As I scrolled through the charts on Friday, I was struck with the near total lack of quality weekly charts under construction. Other than the U.S. Dollar and Natural Gas (if a big break occurs) there was nothing that seemed immediately interesting.

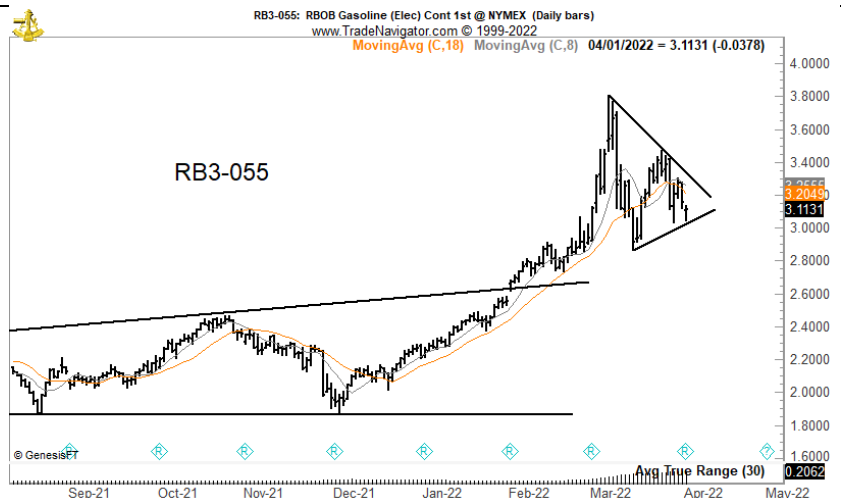


**Gold.** Flat. Flat. The long-term chart remains extremely constructive but I will need to see some signs of a bottom pattern.

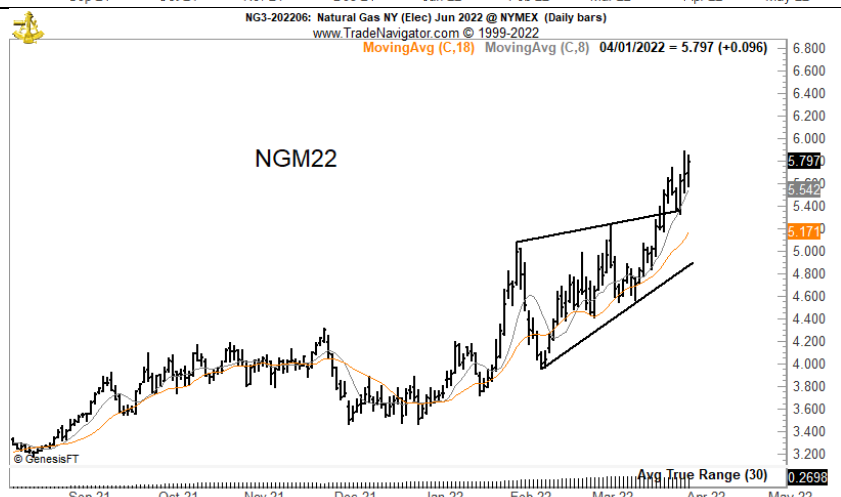
Patterns: Possible Cup and Handle on the monthly graph



**RBOB Gas.** Flat. It would be crazy, but what if Gas is forming a half-mast triangle? The risk would such that I would not be participating.



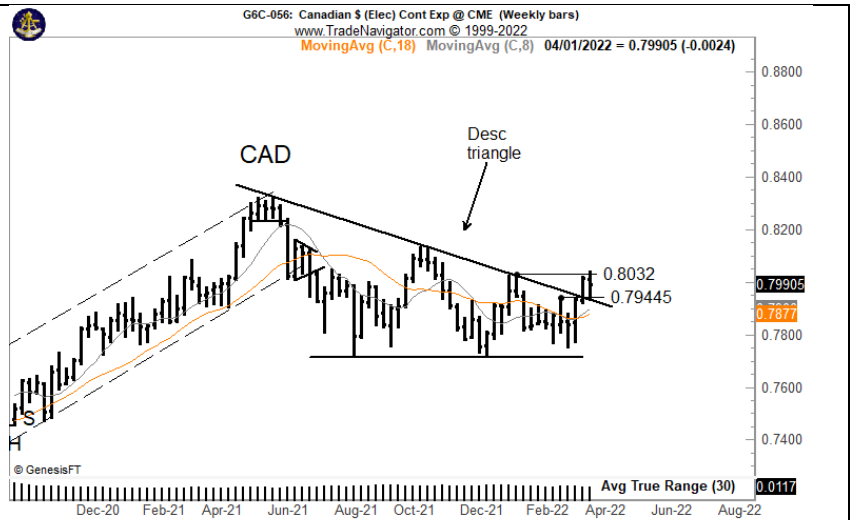
**Natural Gas.** Flat. I was shaken out of a long position this past week, but the running wedge remains in play with sharply higher targets.



**Current positions**

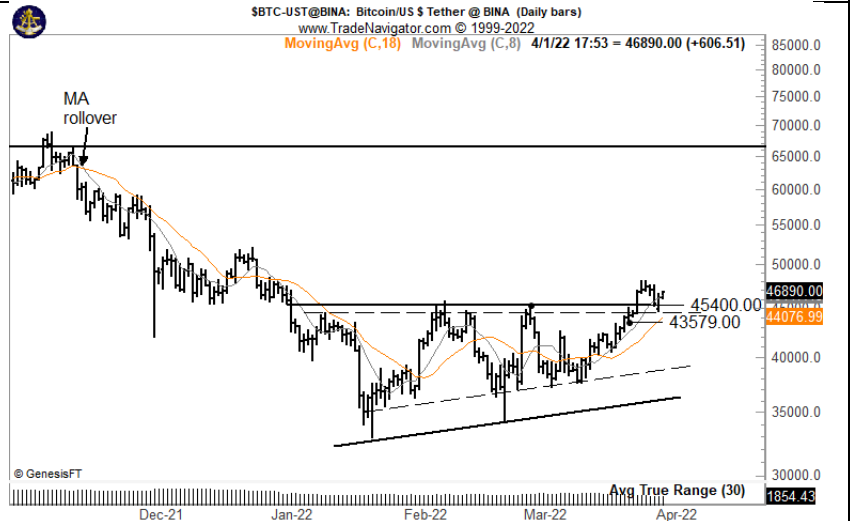
**Canadian Dollar futures.** Long 50% as of Monday. Should the current advance continue, I will add to my position on an ATR breakout of .8032. I still think there is a chance a large bearish descending triangle could be forming.

Pattern: Possible complex "W" bottom



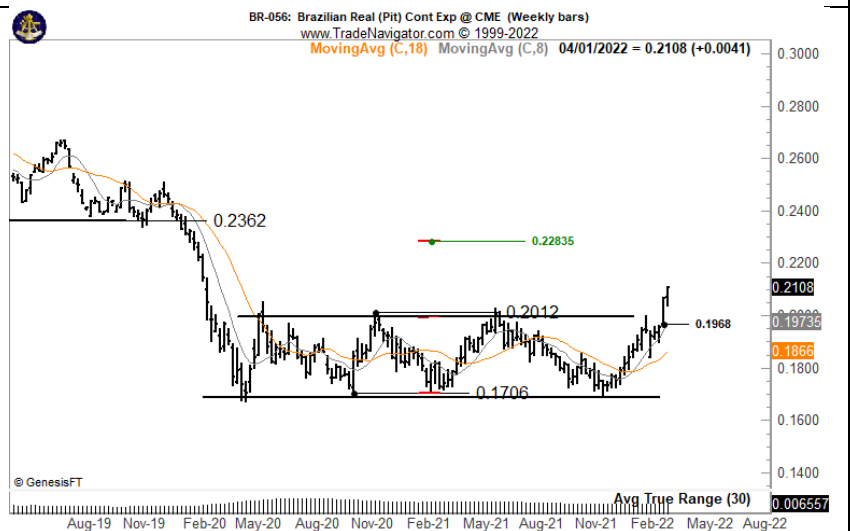
**Bitcoin.** Long 100% (50% was added on Friday). The upper boundary of the rectangle appears to have survived a hard retest.

Pattern: 9-week asc triangle and possible 12-month rectangle on weekly graph



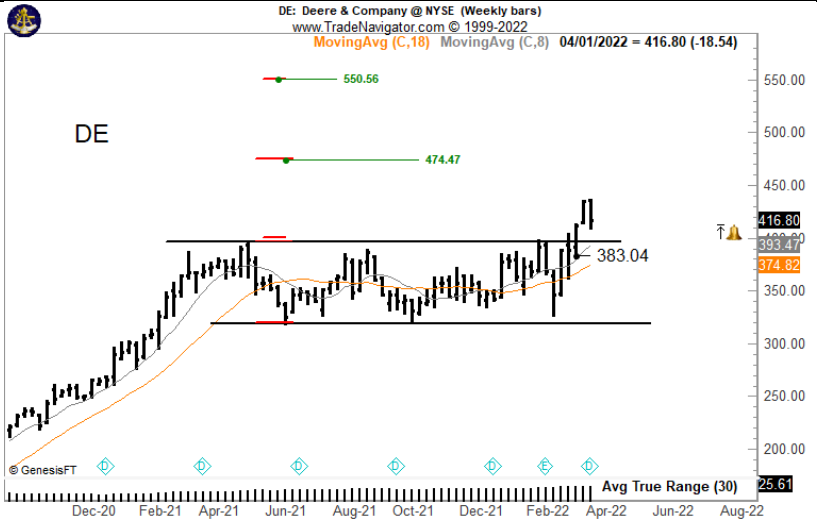
**Brazilian Real futures.** Long 100%.

Pattern: Well-defined 10-month rectangle



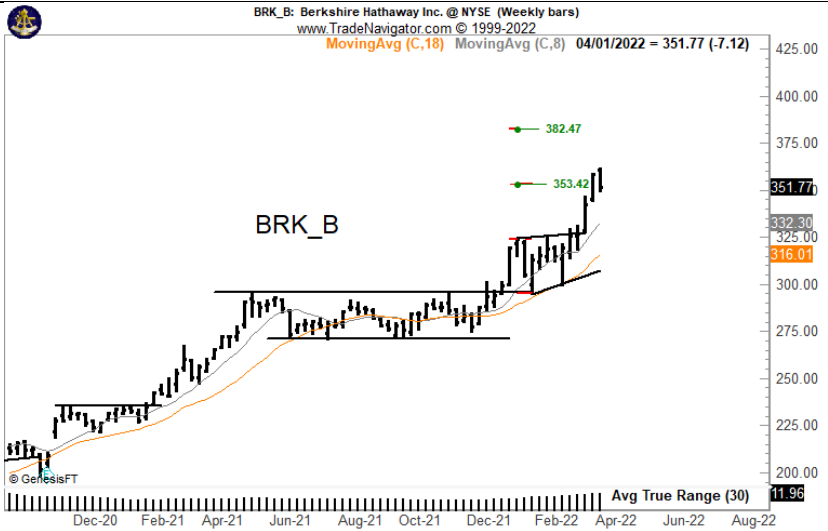
Deere & Co. Long 50%.

Pattern: Rectangle



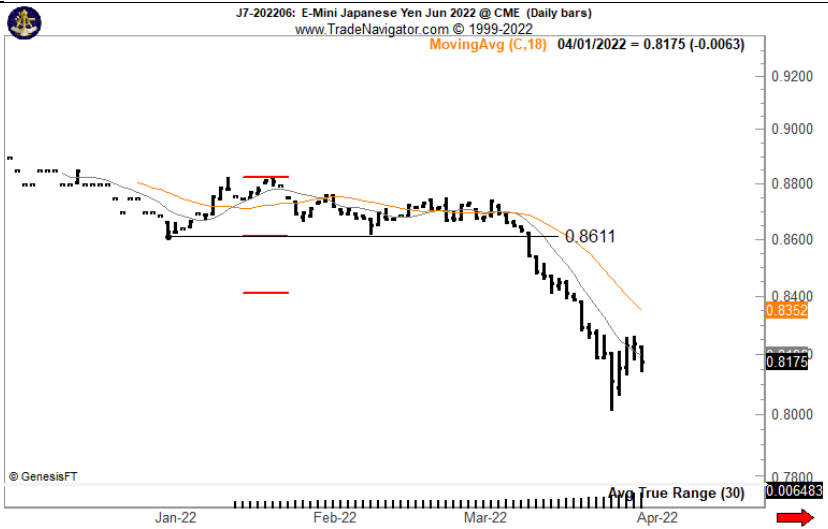
BRK.B. Long 50%. The 2X target of the rectangle has been met. I have tightened up protective stops.

Pattern: 8-week ascending triangle on daily chart as retest of underlying rectangle



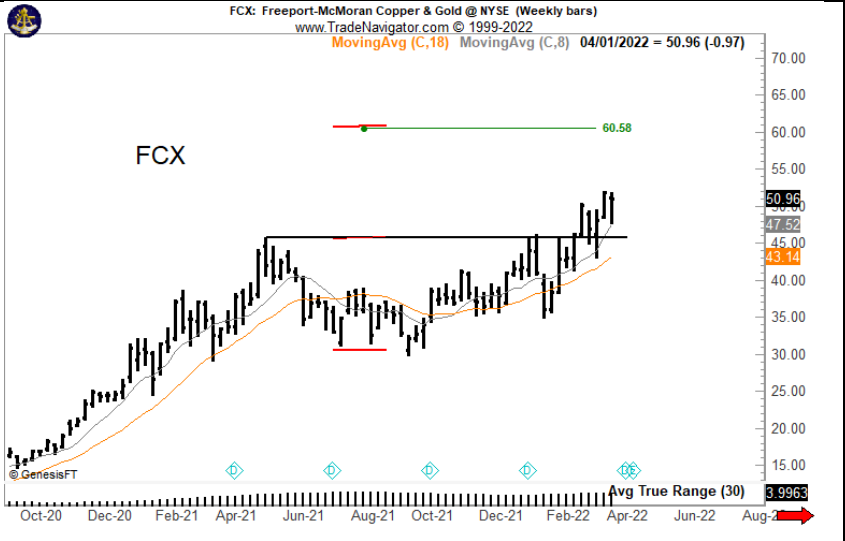
Japanese Yen. Short 25%. Having covered 75% of my position I am willing to give the market wiggle room.

Pattern: 10-week descending triangle




FCX. Long 50%.

Pattern: 9-mo continuation saucer or flat correction on weekly graph



plb  
###

Tracking sheet for the week of Mar 27 ending Apr 1

			Weekly position/symbol tracking - Prop ONLY		
W/O Mar 27					
Beginning Trades	Beginning Positions	Starting radar list for New Initial Positions	Symbols / orders added during week	Actions, End of week position	BP +/-
BREK22	L 100%	Brazilian Real futures		Hold	
BRK.B	L 50%			Hold	
BTC	L 50%			Hold	
DE	L 100%			S 50% Tu 419.34, long 50%	16
FCX	L 100%			S 50% Tu 48.77, long 50%	18
G6JM22	S 25%	Yen futures		Hold	
HEN22	L 100%	Lean Hoggies futures		S 50% Tu 122.45 & 50% 123.75, flat	28
HGK22	L 100%	Nat Gas futures		S 100% Tu 5.4425 avg, flat	10
SIN22	L 100%	Silver futures		S 50% M 25.23 & 50% M 24.96, flat	-33
SIVR (etf)	L 50%			S 50% Tu 23.31, flat	-5
ZC22	L 50%	Dec Corn futures		S 50% Tu 6.565, flat	-31
		FWHK22	Mill Wheat	Cxld	
		G6CM22	Canadian \$	B 50% M .7956, long 50%	
		G6EM22	EuroFX	Cxld	
		GCN22	Gold	Cxld	
		ZSK22	Beans	Cxld	
			BTC	B 50% F 46294.25, long 100%, see above	
			DXM22	Unable	
					3

**Tracking sheet for the week of Apr 3, 2022**

			Weekly position/symbol tracking - Prop ONLY		
W/O Apr 3					
Beginning Trades	Beginning Positions	Starting radar list for New Initial Positions	Symbols / orders added during week	Actions, End of week position	BP +/-
BREK22	L 100%	Brazilian Real futures			
BRK.B	L 50%				
BTC	L 50%				
DE	L 50%				
FCX	L 50%				
G6JM22	S 25%	Yen futures			
G6CM22	L 50%	Canadian \$ futures			
		Gold			
		DXM22			
					0

plb  
###