



Mar 12, 2023

Positions at end of week

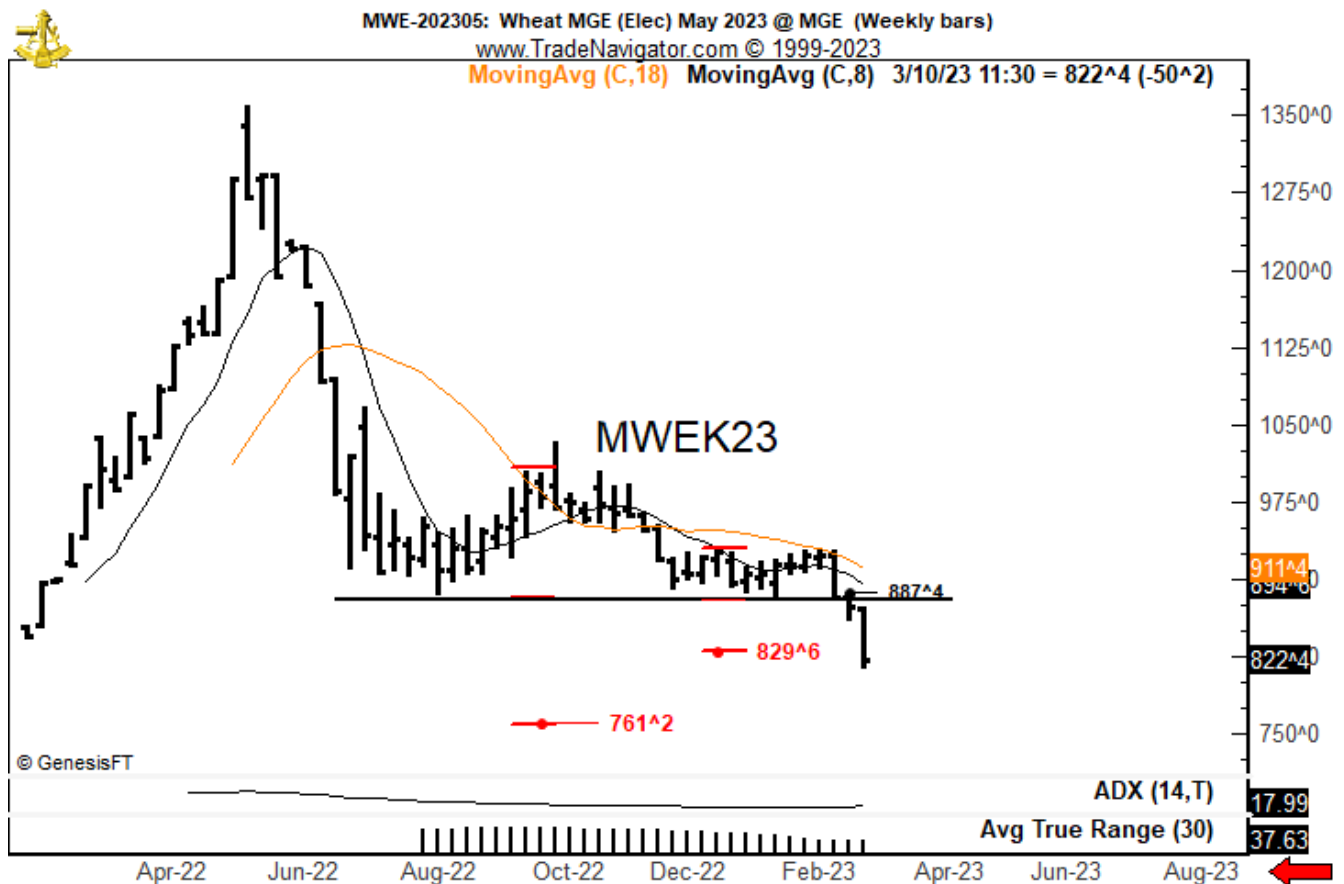
- Short 50% Mpls Wheat futures
- Short 100% Soybean Oil futures
- Short 50% Dow futures

I exited positions in Eurodollars and Euribor on Thursday.

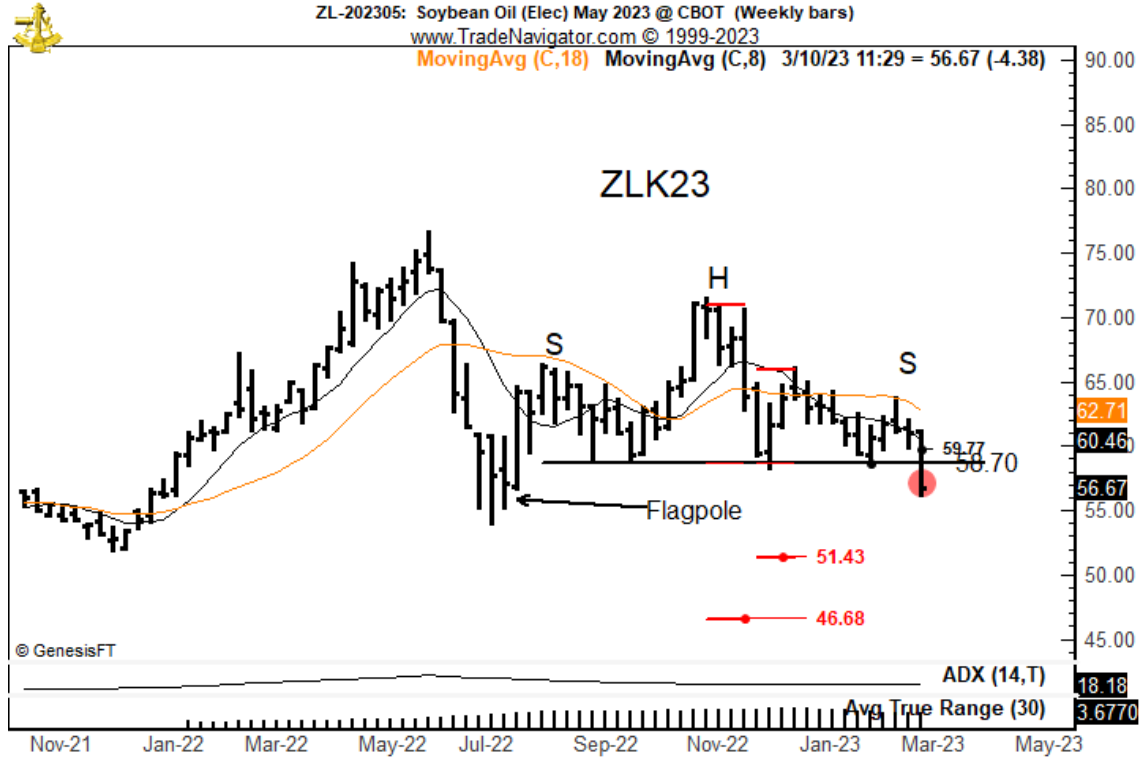
There is a strong possibility I will be traveling in Mexico for the next week. If I go silent you will know why.

Current positions

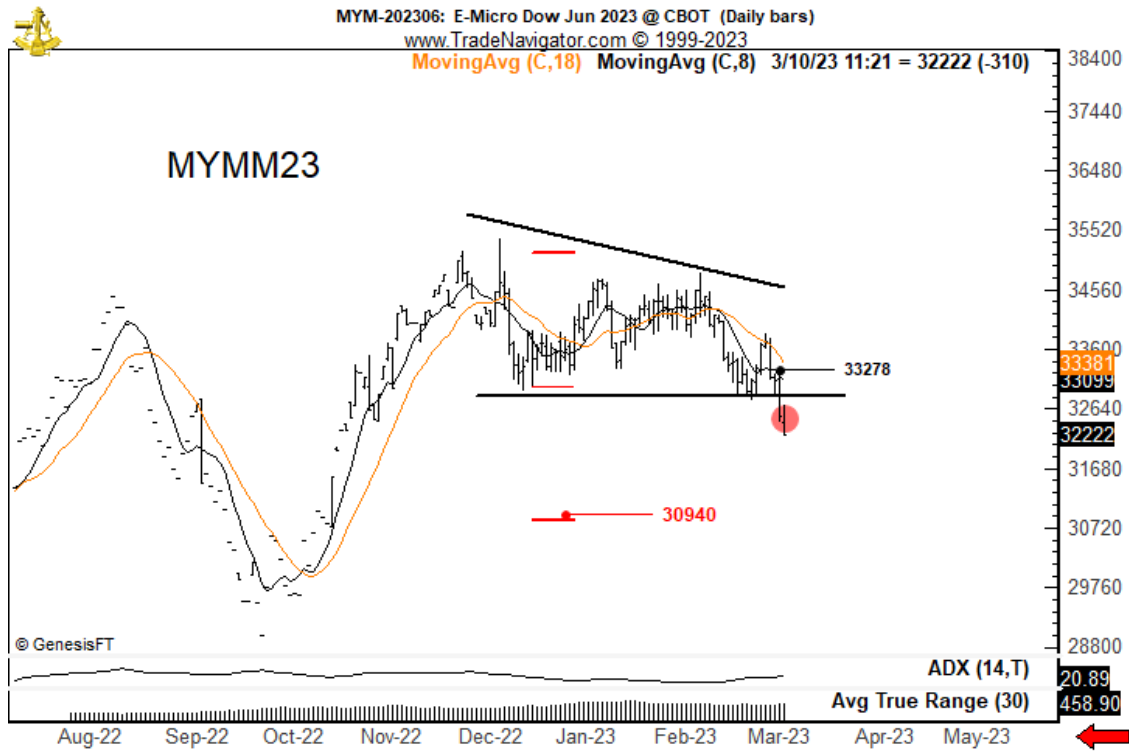
Mpls Wheat. Short 50%. The initial target has been met. I took partial profits toward the end of the trading session.



Soybean Oil. Short 100%.

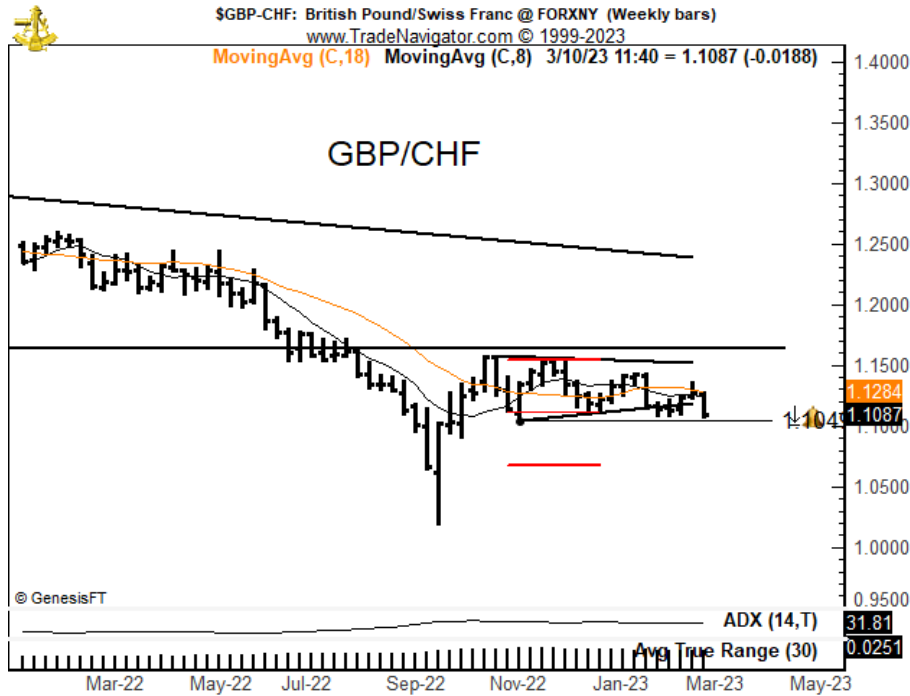


Dow Jones. Short 50%. Descending triangle completed.

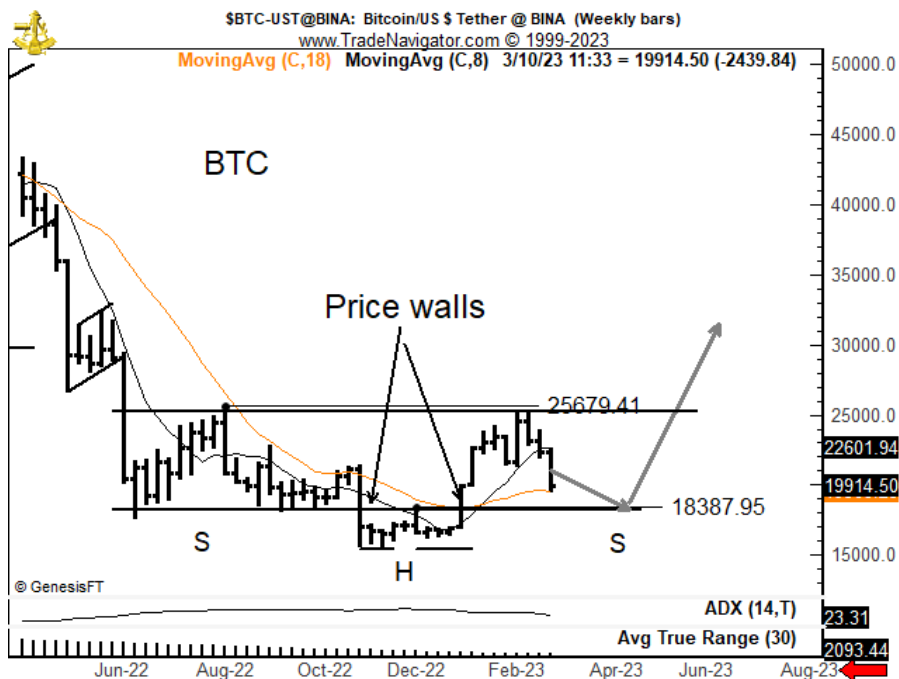


Markets of interest

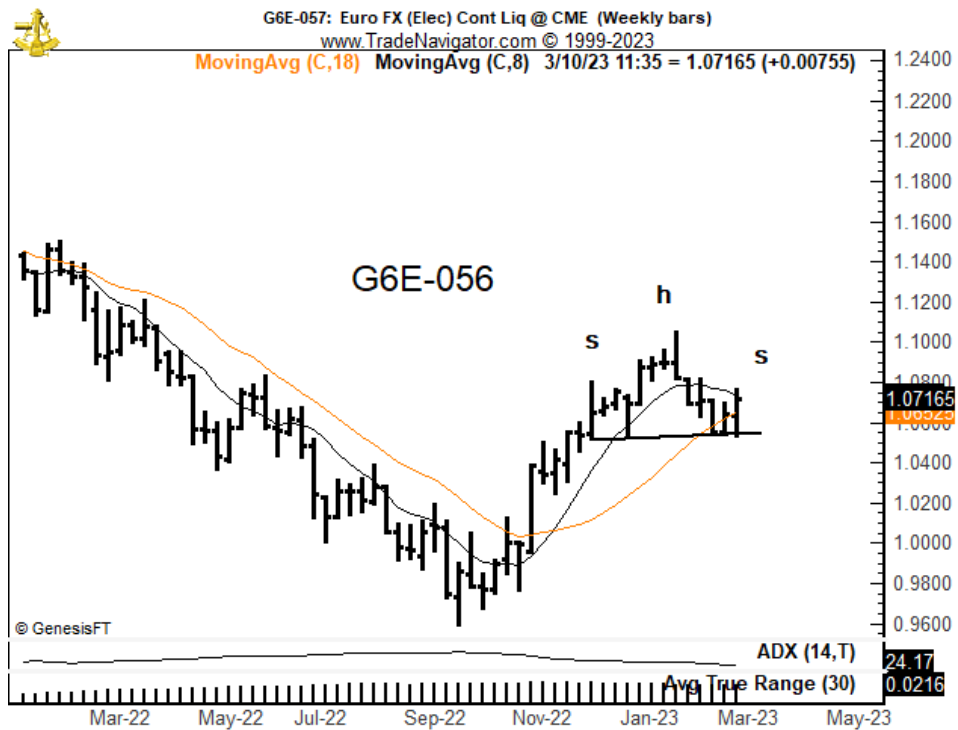
GBP/CHF. My thinking is that this chart should have already broken down by now. I have removed my orders but still have a price alert in place and will take the trade if it is during active European trading hours.



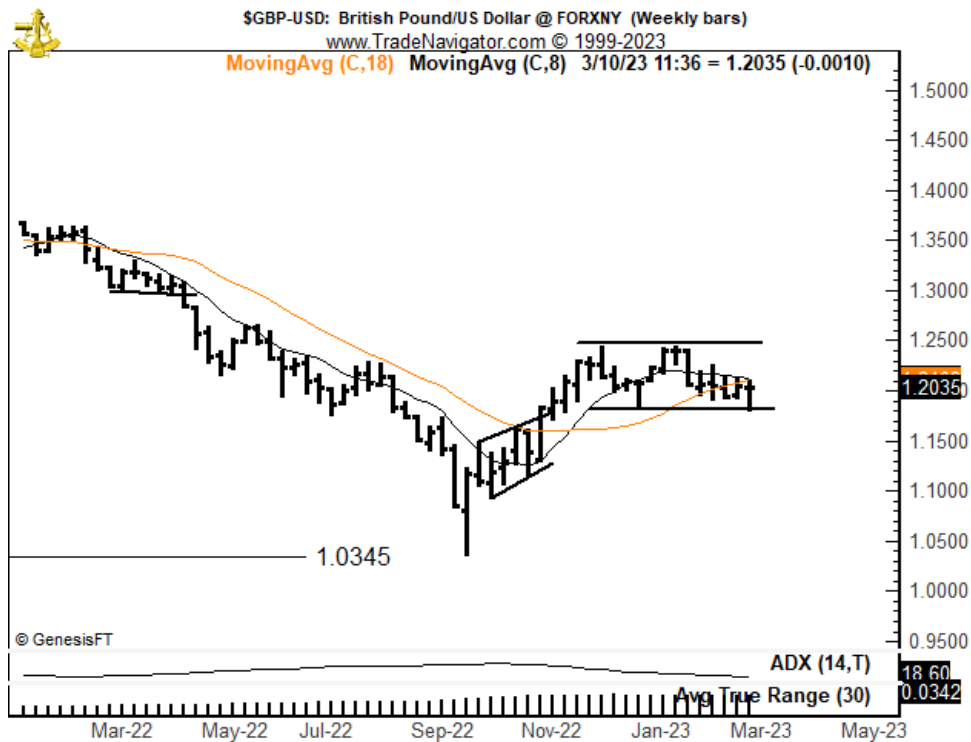
Bitcoin. A possible H&S bottom could form. Be alert. I would prefer a hard test of 18500 to 19000 then a drift sideways for a few days.



Eurocurrency. Like Bitcoin, I am not predicting a H&S pattern in the Eurocurrency but will be prepared if one unfolds. The current right shoulder is not ideal, but acceptable.



British Pound. Possible rectangle or double-type top. I do not want to be short GBP against both USD and CHF.



European Carbon Allowances. A massive ascending triangle continues to unfold. This is a very large contract and not suitable for smaller accounts, but several ETFs exist depending upon the stock exchange market of your choice.



plb
###



Weekly position/symbol tracking - Prop ONLY

W/O Mar 5, 2023

Beginning Trades	Beginning Positions	Starting radar list for New Initial Positions	Symbols / orders added during week	Actions, End of week position	BP +/-
GEZ23	S 50%	Eurodollars		B 50% Th 94.265; flat	141
FEIM24	S 65%	Euribor		B 65% Th 96.245; flat	101
		ECFZ23		Unable	
		SBK23		Cxld	
			XAU/JPY	Unable	
			MWEK23	S 100% M 8.63, B 50% 8.23; short 50%	40
			ZLK23	S 100% Th 57.97, short 100%	
			MYMM23	S 50% Th 32530; short 50%	
		Closed trades YTD	11.7%		282

Key: B = buy, S = sell; M = Mon., Tu = Tu., W = Wed., Th = Thurs., F = Fri., Sa = Sat.; LT = Long-term position



Weekly position/symbol tracking - Prop ONLY

W/O Mar 5, 2023

Beginning Trades	Beginning Positions	Starting radar list for New Initial Positions	Symbols / orders added during week	Actions, End of week position	BP +/-
MWEK23	S 50%				
ZLK23	S 100%				
MYMM23	S 50%				
		ECFZ23			
		XAU/JPY	futures/spot		
		GBP/USD	futures		
		EUR/USD	futures		
		GBP/CHF	spot		
		Closed trades YTD			0

Key: B = buy, S = sell; M = Mon., Tu = Tu., W = Wed., Th = Thurs., F = Fri., Sa = Sat.; LT = Long-term position

plb
###

