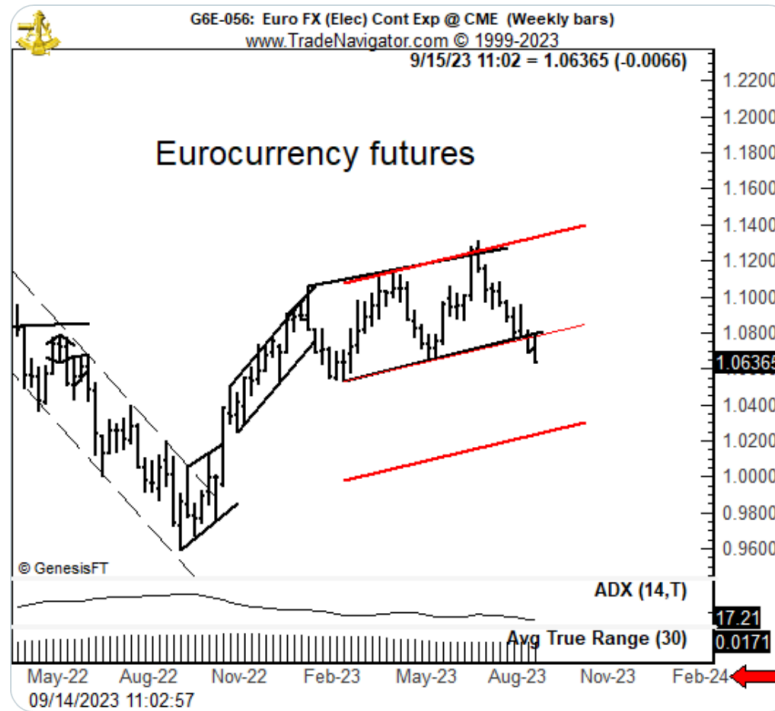


Factor Members Private Twitter Feed - September 14, 2023



FactorMembers @factor_members · Sep 14

Charts that break down from a channel tend to travel a distance equal to the width of the channel. This is shown by lower red line in Eurocurrency \$EURUSD \$G6E_F



FactorMembers @factor_members · Sep 14

Should Cable continue to trend lower, in red are the targets established by the wedge and H&S top \$GBPUSD

