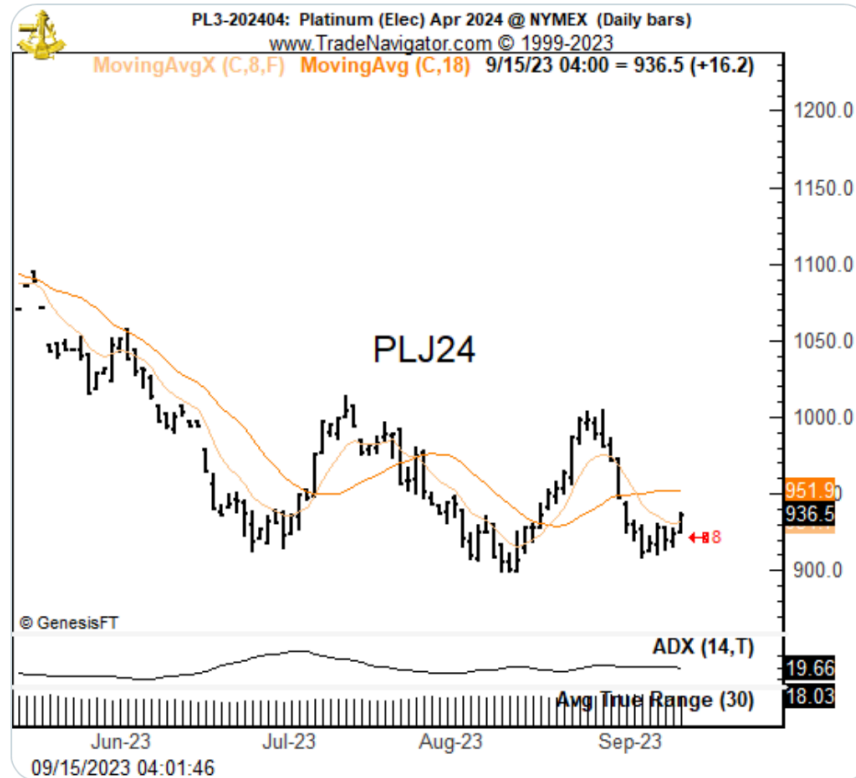


Factor Members Private Twitter Feed - September 15



FactorMembers @factor_members · Sep 15

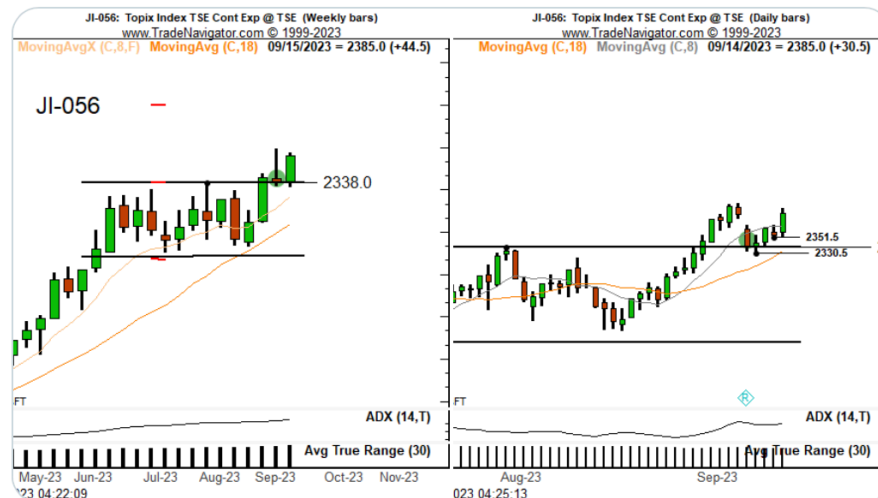
Per comments on Platinum earlier in week, I have taken a small "pick the bottom" long position in Platinum with relatively tight stop. \$PL_F



FactorMembers @factor_members · Sep 15

Trade Update - Topix

Stops now advanced to breakeven for two tranche trade based on 9/11 and 9/13 lows





FactorMembers @factor_members · Sep 15

...

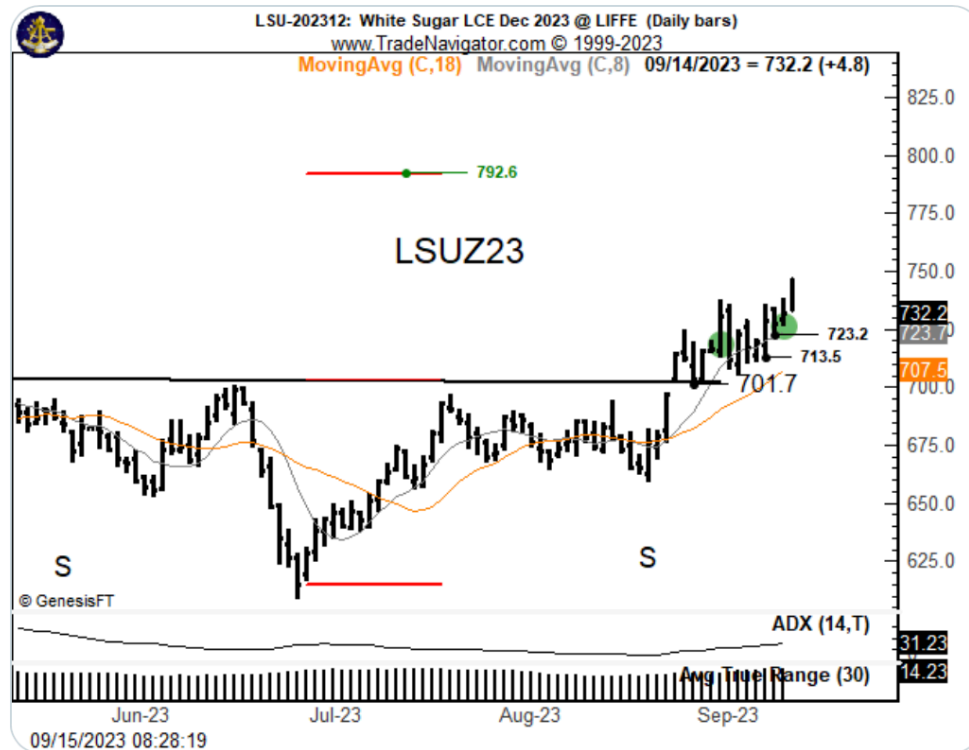
Breakeven trade locked into British Pound shorts \$G6B_F



FactorMembers @factor_members · Sep 15

...

London Sugar is struggling to lift off, but it has yet to put trade into real jeopardy. \$W_F \$LSU_F

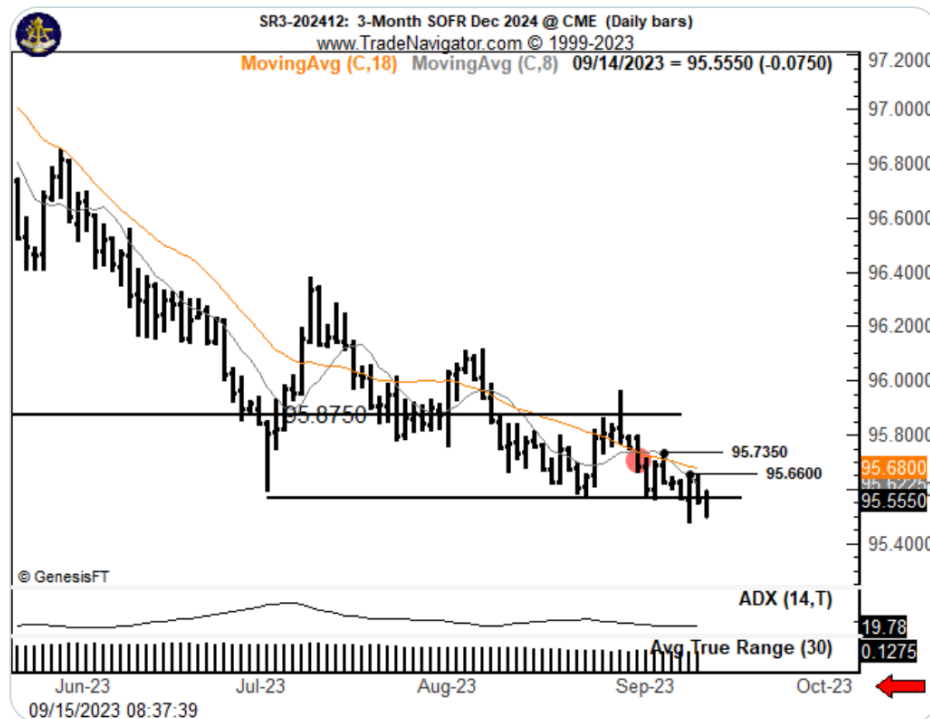




FactorMembers @factor_members · Sep 15

...

Possible that a new daily and weekly low close for decline might occur today Remain short 100% \$SR3Z24



FactorMembers @factor_members · Sep 15

...

Check out my #M2KU2023 analysis on @TradingView:



tradingview.com

Possible H&S chart structure in Russell for CME_MINI:M2KU2023 by ...
A decisive close below the neckline would spell trouble for small caps in U.S. market