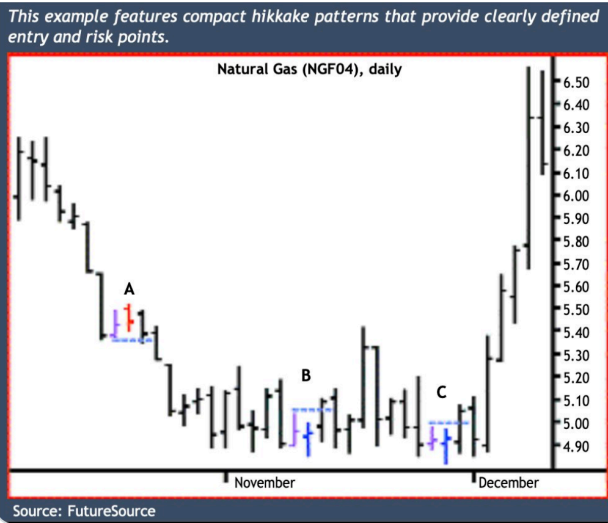


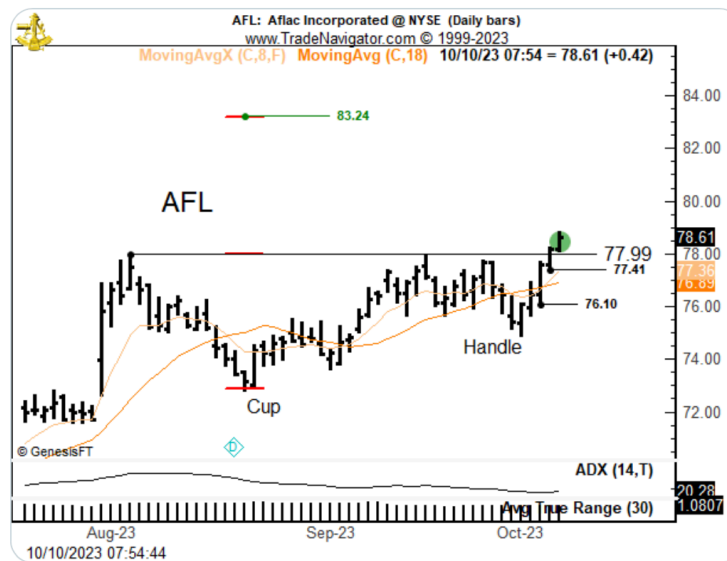
Factor Members Private Twitter Feed - October 10, 2023

FactorMembers @factor_members · Oct 10
 Several years ago a Factor member from Germany did a comprehensive back test across many markets to determine edge gained by Hikkake. The edge was minimal. Yes, when combined with other chart factors the Hikkake can be used for early entry

TechB @Sangr32 · Oct 9
 Replying to @Sangr32 @FredrikEJohans2 and @factor_members
 "Verification must occur within three bars of the hikkake pattern, otherwise the pattern is ignored."
 -- DAN CHESLER, CMT, CTA



FactorMembers @factor_members · Oct 10
 First stock trade in a while. Long \$AFL





FactorMembers   @factor_members · Oct 10



Midweek update for Factor Prop Account Oct 10, 2023

As of Tuesday's close

Long 50% ZCZ23 Corn

Short 50% ZMZ23 Meal

Long 100% AFL stock