

Factor Members Private Twitter Feed - November 6, 2023



FactorMembers   @factor_members · Nov 6 ...

Good morning on a Monday morning. Any questions of me on my prop positions or markets on the radar as we all start the week?



Mark DeMartine  @DemartineMark · Nov 6 ...

Further to Chris's question on the NQ, would you have an eye out for a possible end run long trade similar to ZM?

1 110



FactorMembers   @factor_members · Nov 6 ...

No on meal.

1 106



Thomas Hickey  @thomashickey0 · Nov 6 ...

Did you get long london sugar today?

1 119



FactorMembers   @factor_members · Nov 6 ...

Yes

1 100



superB @mcsuperb123 · Nov 6 ...

is sugar going to end in a parabolic run?

1 131



FactorMembers   @factor_members · Nov 6 ...

That has been the pattern this year with the "softs" commodities

1 154



superB @mcsuperb123 · Nov 6 ...

so it's different in different years? I thot commodities are always a boom and bust, and end in parabolic run, but it's not always the case? it depends on the period of time also right?

1 73



FactorMembers   @factor_members · Nov 6 ...

Commodities spend far more time in the bottom 25% of their long term price ranges than in the upper 75% of the range. Parabolic runs come when their are shortages of the commodity item.

2 67



Brad @bczorb · Nov 6
Did you get long DBA today?

1 1 94



FactorMembers @factor_members · Nov 6
Not an ATR BO -- yet

2 92



pradeep @pradeeplwt · Nov 6
Corn charts forming rectangles pattern any position on that? Also any view on S&P plz

1 141



FactorMembers @factor_members · Nov 6
I see the possible rectangle in Corn. No real opinion in S&Ps other than huge Cup and Handle

1 138



pradeep @pradeeplwt · Nov 6
So for you a possible trade is only when S&P break handle (above 440)?

1 80



FactorMembers @factor_members · Nov 6
As it is right now, yes

1 86



Mark Bradford @skidisco · Nov 6
You noted that your Meal trade would likely become a Pareto trade. Is there certain characteristics within the base pattern and/or base breakout that you have identified from studying past Pareto trades?

1 3 197



FactorMembers @factor_members · Nov 6
Not really. My hope for every trade is that it will be a Pareto trade. We only know after the fact which ones worked.

1 3 188



mark macaluso @mmacalnj · Nov 6
is the dec sofra trade a 100% position where you will use 2 steps to manage the trade? friday's low and or lower/higher?

46



Anmol Jain @AnmoUa60391982 · Nov 6
Sir, why did you not enter ZS trade last week

1 1 233



FactorMembers @factor_members · Nov 6
Discretionary decision. I really did not like the left shoulder, and I was already long Meal

5 234



Mark P Coryea @CoryeaMark · Nov 6

Silver, what was your entry trigger?

1



1

207



FactorMembers @factor_members · Nov 6

No signal in SLV or GLD. Law of least regret -- it bothers me more not to have a PM position than it would be take a small loss right now. Just felt etfs allow for greater holding power than futures. I will not hesitate getting out of the trade if mkt rolls over



Chris @Chris201450 · Nov 6

On NQ, where would you short or buy, if you had to?

I'm short currently and just looking to see where should I exit, and then go long, because I think the short side will be pennies compared to the amount made on the long side.

Thank you sir.

2



2

196



Chris @Chris201450 · Nov 6

Also, I have an idea where to take profits on the short and when to stop out, just want to see if your thinking aligns with mine. Thank you again for your help.

1

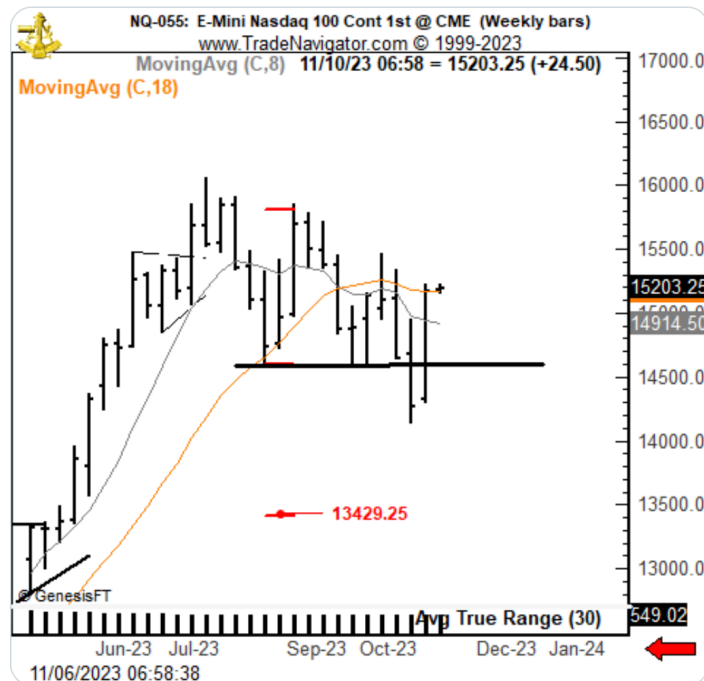


54



FactorMembers @factor_members · Nov 6

You are on your own. Chart defies anything I would want to do. The short signal I had was terminated when market climbed back above boundary of desc triangle



1



2

203



Chris @Chris201450 · Nov 6

I see, thank you again for the detailed response and follow up, I appreciate it!

6

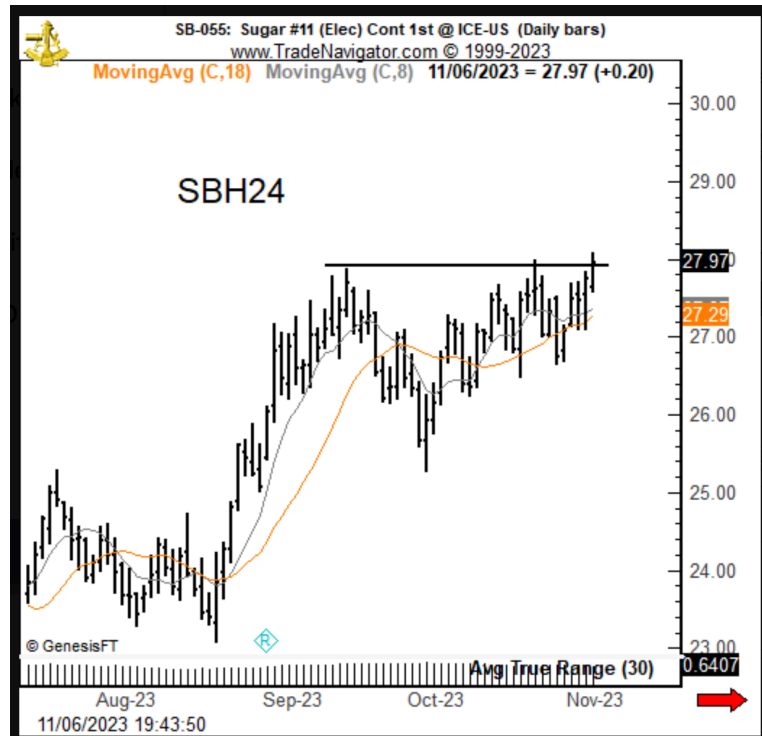
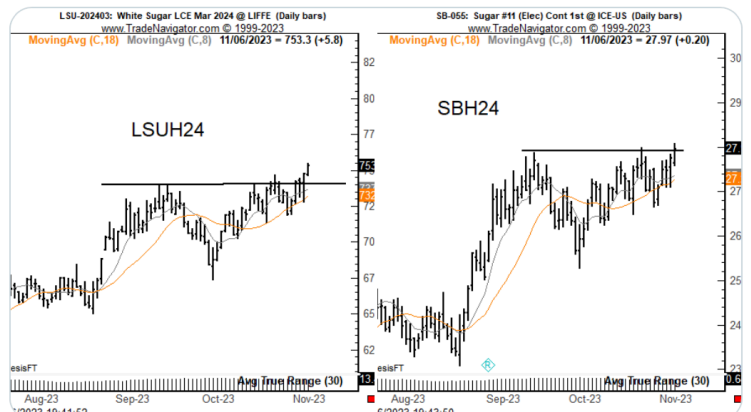


6





Sugar. I preferred the London contract because it really made its BO on Friday's close. So, I choose London rather than NY #11.





The fundamentals are not positive in Corn. Huge carryout expected. Prices could be rolling over. Weekly chart support at around 4.50

