

Factor Members Private Twitter Feed - December 28, 2023





FactorMembers   @factor_members · Dec 28


Test question.
Has a three-day trailing stop rule been triggered in London Mar Coffee?????
Please explain your Yes or No answer



Dimitar Dechev @DechevDimitar · Dec 28
I was going to say yes, but seeing the answers looks like I'm wrong. Trying to understand why it was not triggered 2 days later.

FactorMembers   @factor_members · Dec 28
Three bars needed
1. High day
2. Set up day - this has a closing price below the low of the high day bar
3. Subsequent decline below the low of the set up day bar -- this has not happened

monroe bernold @mbernold · Dec 28
yes, on the first high, the stop was triggered 2 days later

FactorMembers   @factor_members · Dec 28
Nope. Dec 21 was high day. Dec 22 was arguably set up day. Low of Dec 22 was not violated, thus no trigger day

IdahoTrader  @StudiareTutte · Dec 28
No

Quantitative Trading @QuantTradeEdge · Dec 29
No, three day trailing rule is from the most recent high.

monroe bernold @mbernold · Dec 28
yes, on the first high the stop was triggered 2 days later

Game & Watch @Co_Located · 18h
I like the type of post Peter! Best way to learn is to be queried.

Fibonacci's Ghost @Super_DaveO · Dec 28
Great answers, everyone. I love these visual examples.

Sandor Zempleni @Zempleni · Dec 28
No, because the low of the setup day has not been penetrated

YJ Chen @MeioSa · Dec 29
No. It triggered, however the low of the triggered day hasn't hit yet. (The low of the trigger day will be the stop price).

Raymond @rayneta40 · Dec 28
Not yet. High day established. the second day close below the highest day. This is setup day. Still not break that day low.

Theodore Sofokleous @theosofo · Dec 28
No, low of high day not breached and still above 8 D SMA

andrea @andrea97686205 · Dec 28
In my opinion no. High day on 21. Close below low on 22 -> low of 22 becomes stop level. Level not (yet) broken

Michael @mikeyjoeoshea · Dec 28
agree



FactorMembers @factor_members · Dec 28

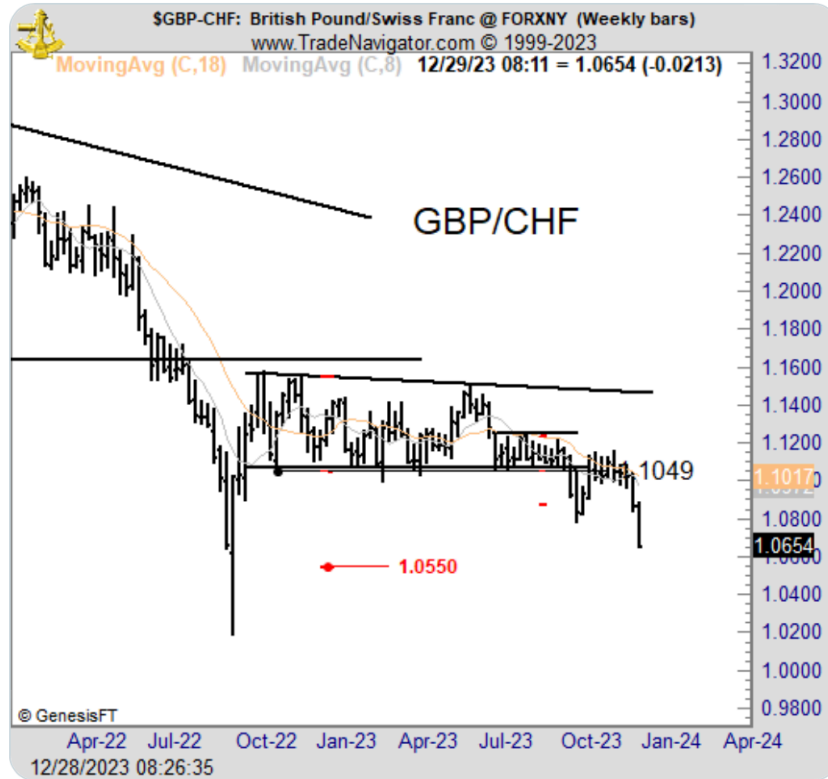
...

Note on importance of persistence

\$GBPCHF was a set up I commented on extensively, but then took my eyes off the trade after first breakout failed

2023 has been a year of numerous initial BO failures, then followed by valid secondary BOs

I missed this one



FactorMembers @factor_members · Dec 28

...

Factor Prop portfolio as of Thurs 0900 Mountain

Long 50% Mar Russell futures

Long 50% Apr Gold futures

Short 100% GBPAUD spot

Long 50% Mar Lnd Coffee

Long 50% Mar Dow futures

Long 50% Mar Nasdaq futures

Only orders working this week are Nikkei Dow

Otherwise, liquidation only