

Factor Members Private Twitter Feed - November 30, 2023



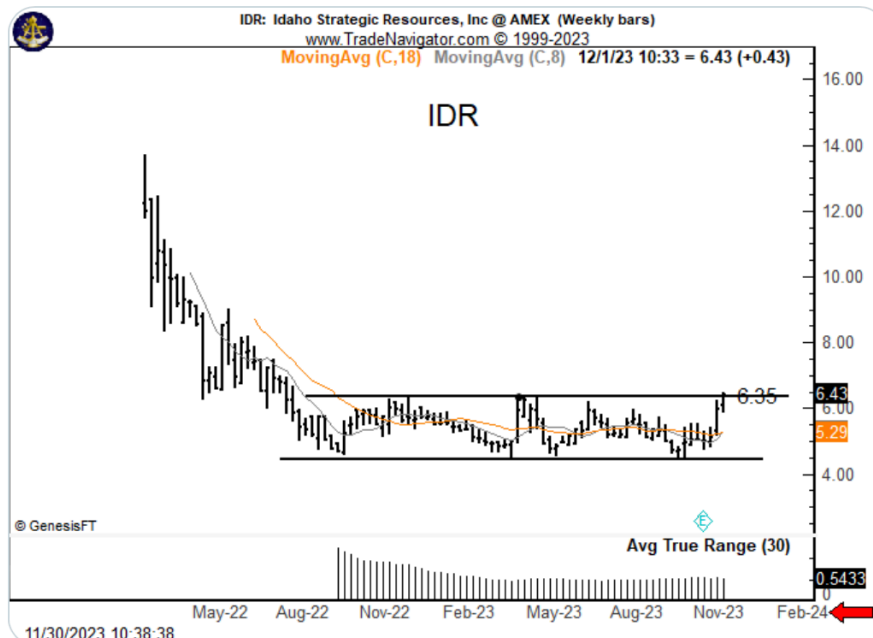
FactorMembers @factor_members · Nov 30

Corn reached the support zone I have cited for many weeks and price is bouncing higher from that support zone. No bottom yet [\\$ZC_F](#)



FactorMembers @factor_members · Nov 30

Adding this individual stock to my radar list. Generally I do not trade stocks less than \$50 per share [\\$IDR](#)



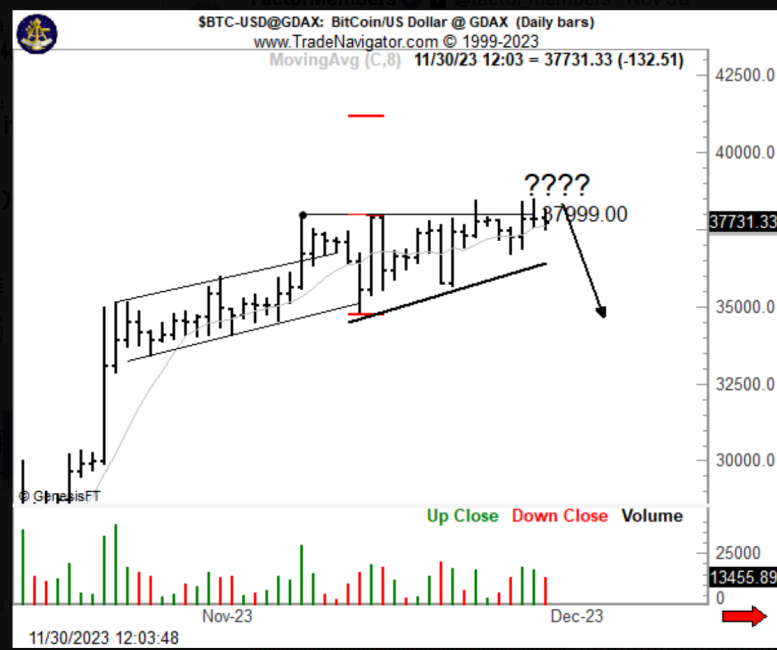
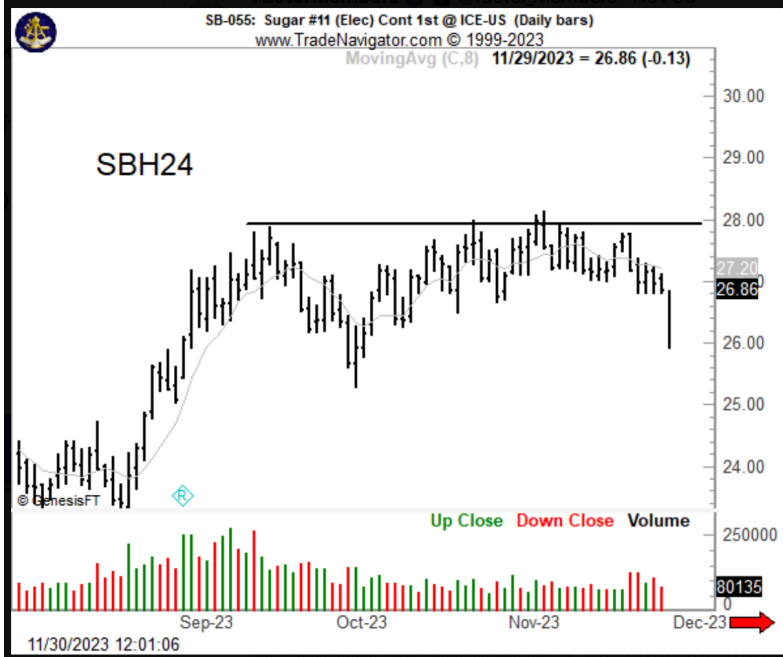
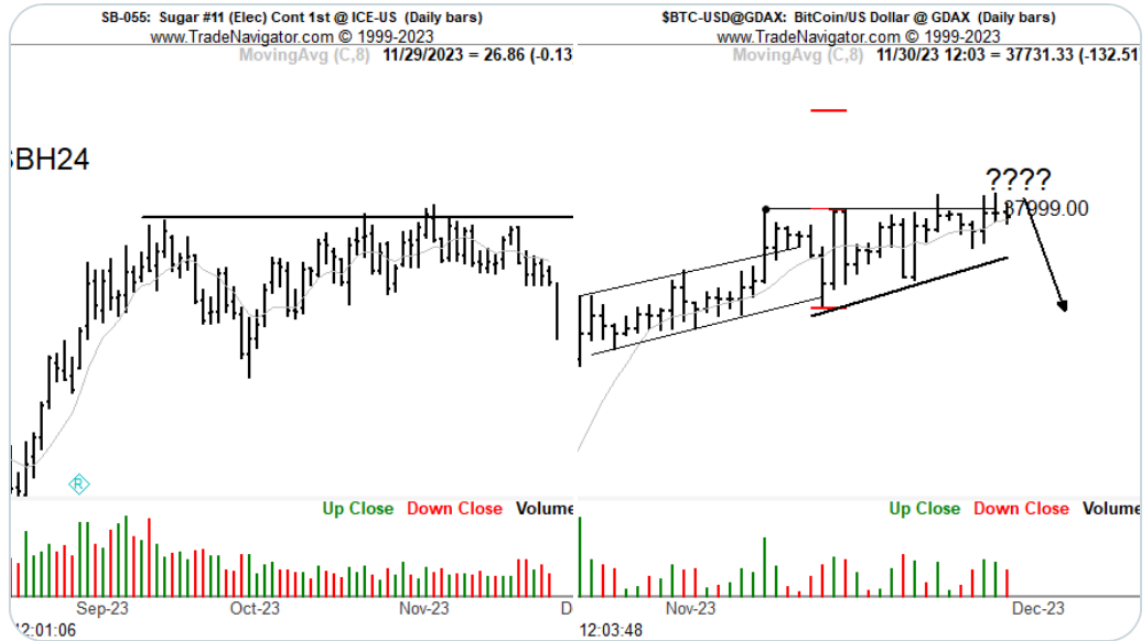


FactorMembers @factor_members · Nov 30

...

Is the short-term BTC chart similar to #11 Sugar chart

Tried upside BO but could not make it, then rolling over in Sugar



Too many positions on in Factor Prop Account at EOD Thursday
Long 100% IDR
Long 100% SR3Z24
Long 100% ZNH24
Long 65% GCJ24
Long 100% G6CH24 (Canada)
Long 50% URA
Long 100% G6AH24
Long 100% JNEH24
Long 50% GLD
Long 50% AAPL
Long 50% BTC
Jamming stops to at least BE in all trades



FactorMembers   @factor_members · Nov 30

So in cases such as this I always want to dampen my expectations. In reality, lots of positions as currently held tend to offer surprise windfall profits or series of stop-outs. Such is trading. I always view it as quite positive when I have so many positions with overall BE



FactorMembers   @factor_members · Nov 30

Robusta poised (Jan contract) to make new contract highs **\$D_F** (IBKR symbol) **\$RC_F** (TV symbol)

