

Factor Members Private Twitter Feed - January 12, 2024



FactorMembers   @factor_members · Jan 12



The trading tranche has achieved a 100 BP profit in Nikkei. As an ode to disciple and a nod to the fact this is my fav trade right now, I am splitting the T Tranche into two and taking profits on a half of the half



FactorMembers   @factor_members · Jan 12



On the theme of taking money off the table, I am taking off half of a half tranche of Soybean shorts (i.e., 25%)



FactorMembers   @factor_members · Jan 12



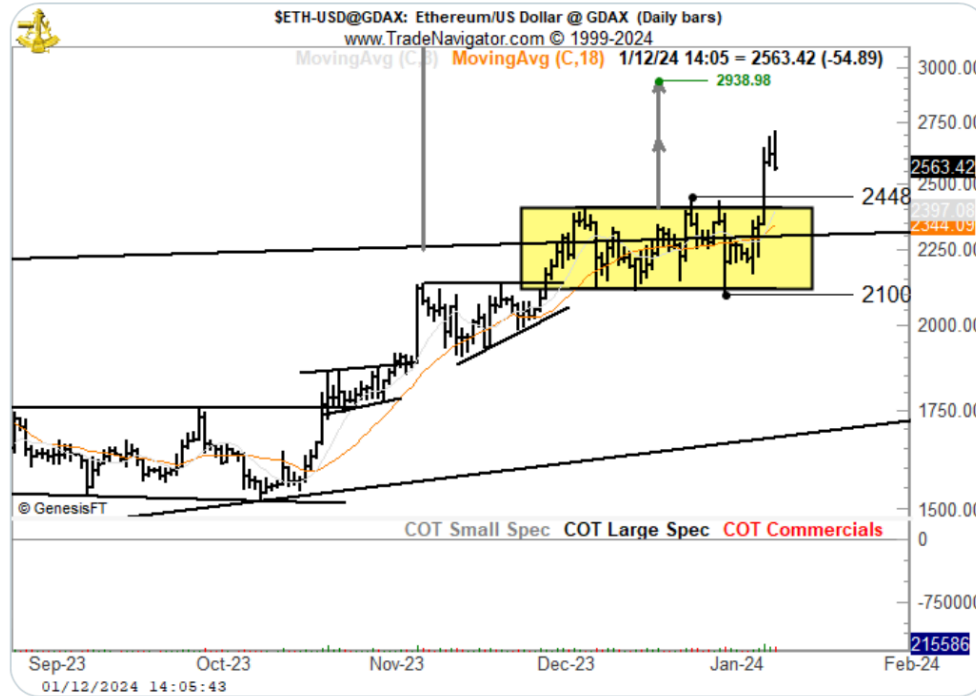
Update on TD Ameritrade (Think or Swim) and Schwab (StreetSmartEdge) Supposedly the deadline is set for May to migrate all StreetSmartEdge platform users over to TD Ameritrade. What I don't know is whether my passive IRA accounts from Schwab will need a second TorS app open



FactorMembers @factor_members · Jan 12

...

A sweeping reversal results in exiting 50%, a Friday closing price loss would flatten my position



FactorMembers @factor_members · Jan 12

...

Hey Tom @McClellanOsc

I hear what you are saying about COT in Gold - and in concept see historically large commercial short positions as a head wind in all markets. Yet, I also have noted that previous bull markets in Gold were launched with equally problematic COT profile

