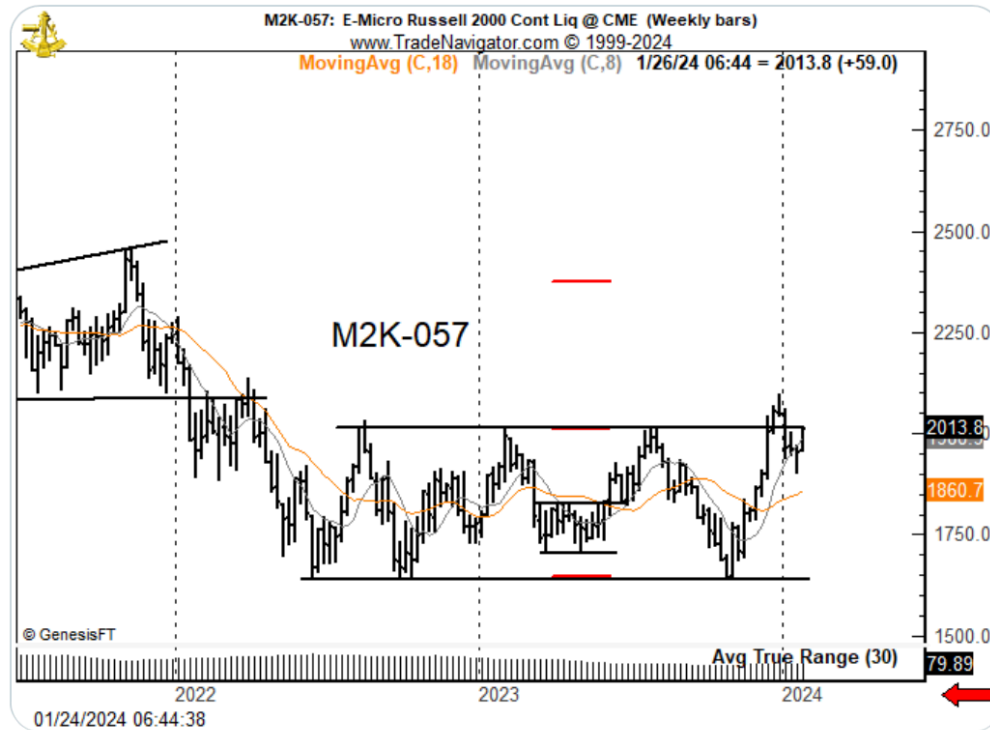


# Factor Members Private Twitter Feed - January 24, 2024



**FactorMembers** @factor\_members · Jan 24

I am prepared to go long the Russell \$M2KH24



**FactorMembers** @factor\_members

@factor\_members

The NY "C" Markets from Hell

Notorious during pit days (and even now) for erratic behavior and running for stops

Cotton

NY Cocoa

Coffee

Copper

This is reason I trade Cocoa and Coffee in London and Copper and Cotton VERY rarely

Trading is hard enough without having to fight the HFT algos (which replaced the crooked pit traders)



**Chris** @ChrisGoals · Jan 24

Replying to @factor\_members

Can you list all the markets from hell?



**FactorMembers** @factor\_members · Jan 24

...

Getting asked a bunch about Copper

1. No apparent pattern on daily/weekly
2. COT data is constructive
3. Strong seasonal tendency to rally 1st qtr
4. Member of NY "C" Markets from Hell



4    ↻    25    1.7K    📌    ↗



**FactorMembers** @factor\_members · Jan 24

...

My primary task as a trader is to control my risk. This is a hard task with the C-Markets from Hell.



**FactorMembers** @factor\_members · Jan 24

...

Hey Factor members. Just getting back to the computer after being busy all day. I am behind responding to questions and will try to catch up. I have a RealVision show tomorrow morning so not sure when I will catch up.