

Factor Members Private Twitter Feed - February 13, 2024



FactorMembers   @factor_members · Feb 13



Factor Prop account is now flat in U.S. equities.



FactorMembers  



@factor_members

Are you having fun yet?

Crazy day in Prop Account

Wacked in U.S. stock index futures, even though MNQH24 closed at +126 BPs and -34 BPs in M2K

Now short Gold futures

SOFR and T-Notes in big down day so far

Profits taken on tranche in Nikkei Dow futures

Stopped Copper futures. Bumped out of half of short USDX futures.



FactorMembers  



@factor_members

Just to review my Russell trade M2KM24

Entered 100% above Friday's high at 2052.6

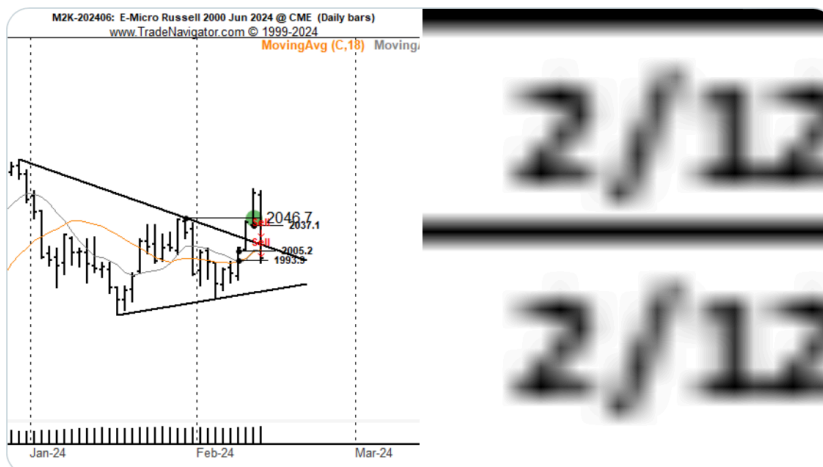
Initial stop/limit orders were 1983.7 moved to 2003.8

and 2000.8 moved to 2030.4 (below Monday's low)

Initial risk was 56 BPs

Sizing of tranches per \$1MM were 8 and 11 lots

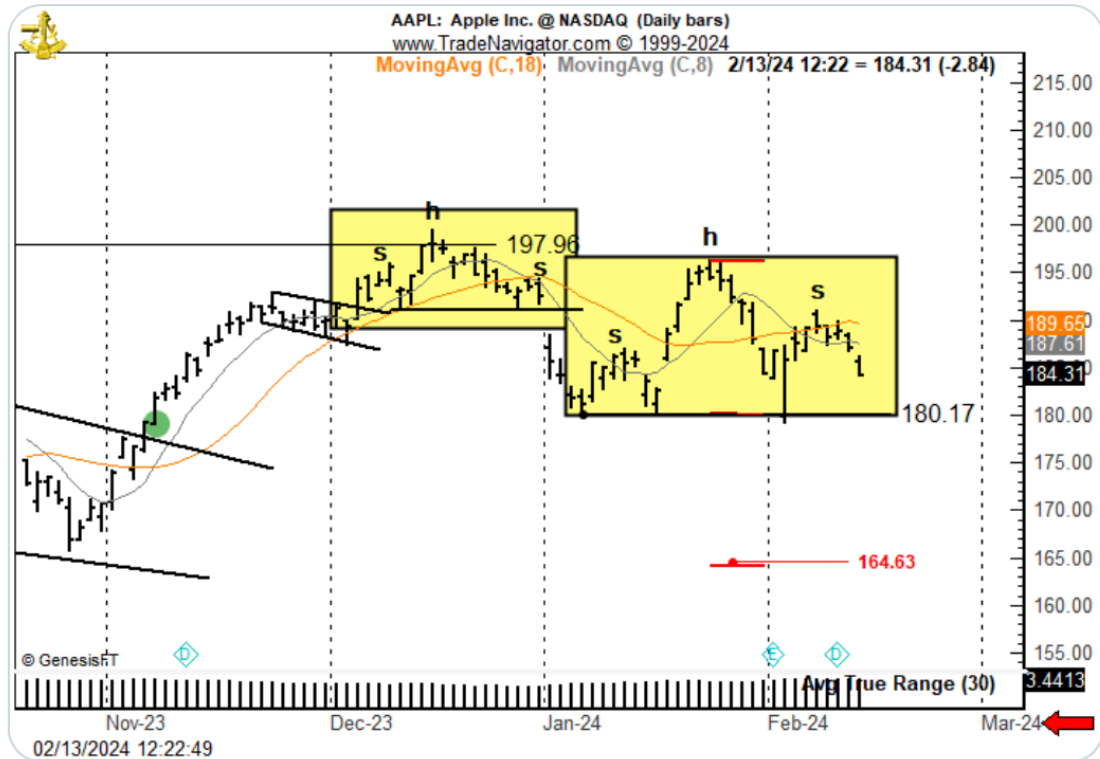
With sym triangles I typically am very aggressive with trade management





FactorMembers @factor_members · Feb 13

\$AAPL





Possible wedge in Nasdaq \$NQ_F



Commentary

I was stopped out of a tranche of DXH24 near the absolute low of the day. Then the huge upside reversal. This happens. It is my policy to NOT chase the rally.

Also sharp reversal in Russell a day after a big breakout. This too happens.

Absolutely nothing unusual about getting whipped around.

Important to hold positions WITHOUT holding opinions. Best to be agnostic about all trades.



FactorMembers @factor_members · Feb 13



Here was the set up in Gold
10-week symmetrical triangle
Used 30% of 30-day ATR with a 2016.6 stop/2016.4 limit
Sell stop had attached an offsetting buy top at 2043.9, above Monday's high. Will look to lower stop.

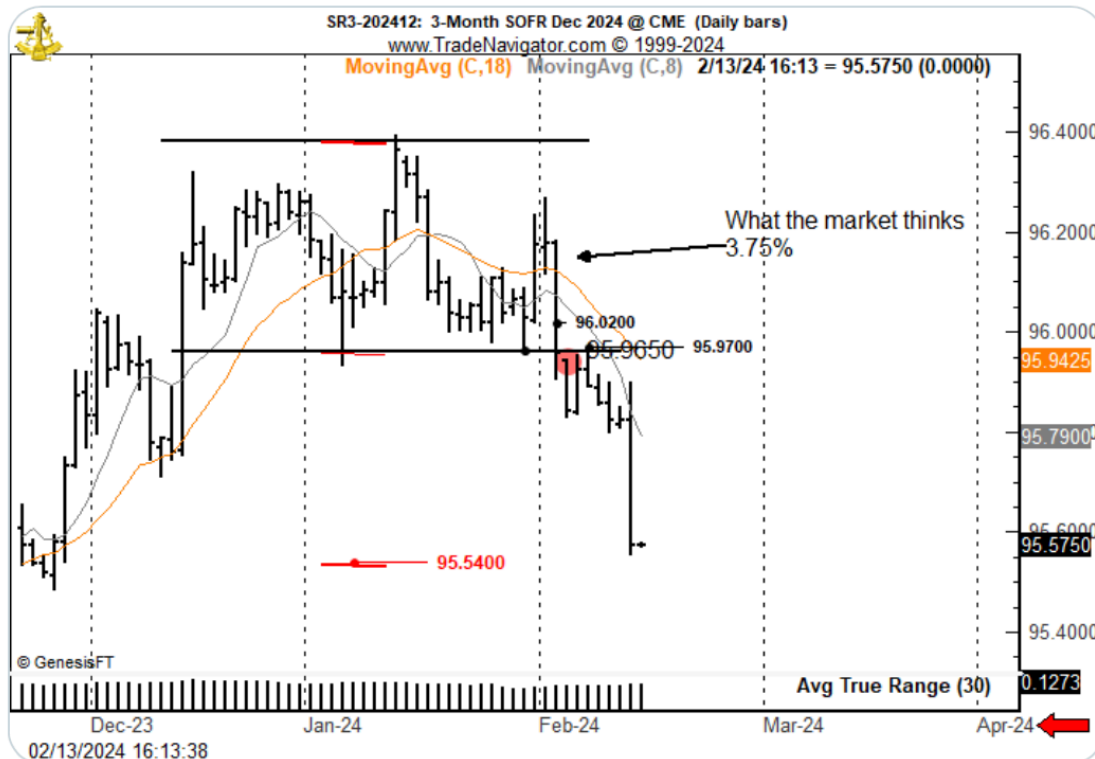


FactorMembers @factor_members · Feb 13



Comment on SOFRZ24

I have split my entire position into thirds and covered one-third (covered position will show up as a Feb 14 trade on the P/L).





FactorMembers  

@factor_members



Factor Prop Account positions as of EOD Feb 13 -- just to update given the craziness of it all

Short 50% EuroFX futures

Long 50% Nikkei Dow futures - covered a tranche today at target

Short 50% Aussie \$ futures

Short 50% USDX futures - bumped out of half today near low

Short 66% SOFR Dec 2024 futures - covered 1/3rd at afternoon reopening

Short 50% 5-Yr Note futures - target within reach

Long 50% Cotton futures

Short 50% spot AUD/NZD

Short 100% Gold futures

The weekly chart spin-off account is short Soybeans, long Nikkei and long Cotton

I am really encouraged by the rules being developed for trading weekly charts.