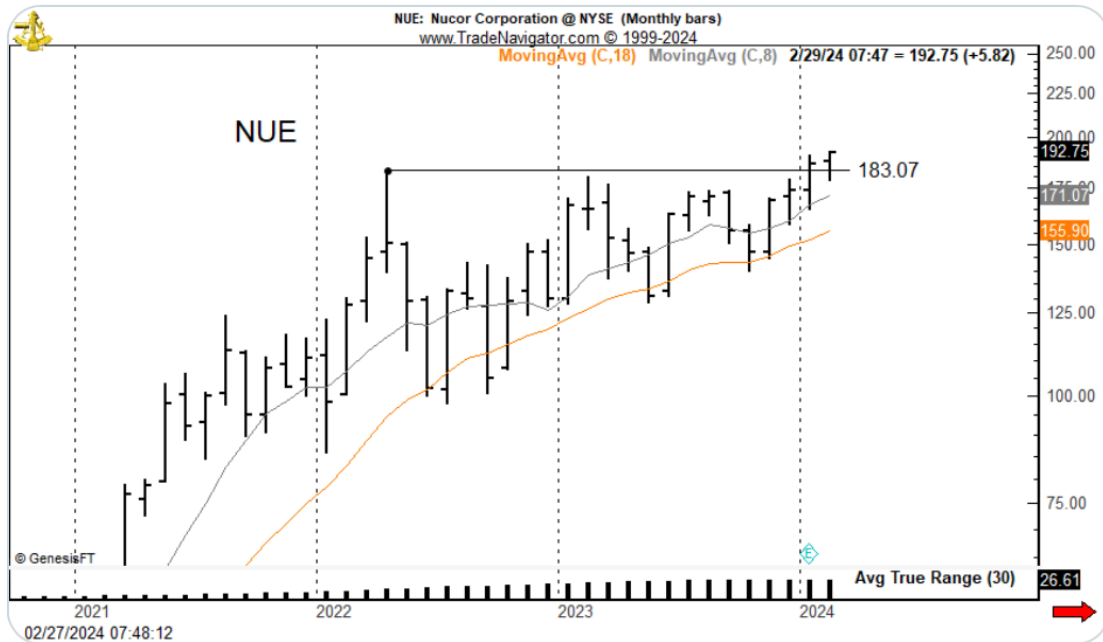


Factor Members Private Twitter Feed - February 27, 2024



FactorMembers @factor_members · Feb 27

Chart of interest
Interesting stock chart \$NUE



FactorMembers @factor_members · Feb 27

Big day up for Cotton. Congrats to all you Factor Members who one upped me by staying fully long. This might become your year's biggest trade \$CT_F





FactorMembers @factor_members · Feb 27



Chart of interest. This is what a classic Horn looks like. But do NOT trust me on Russell. I will be elected into the "Wrong on Russell" Hall of Fame



FactorMembers @factor_members · Feb 27



Any questions I might try to answer for members???



Blitz @mrblitzeria · Feb 27



What do you prefer, entering a trade with optimistic or pessimistic biases?



117



FactorMembers @factor_members · Feb 27



Always want to guard my expectations. I do not want to get too emotionally high or low. I work hard at staying as centered as possible.



197



JK @jonbking · Feb 27



Pickleball today? Any cool plans this week?



203



FactorMembers @factor_members · Feb 27



No PB today, but big match tomorrow



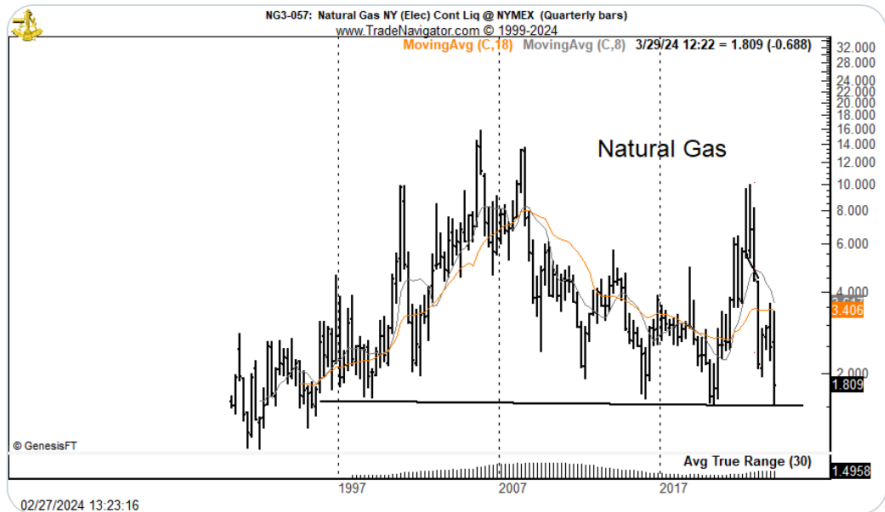
229



Salvador Chavarria @schavarriaTexas · Feb 27
Peter - theres some potentially interesting structural things happening in natural gas. What do you think of the commodity?

1 1 156

FactorMembers @factor_members · Feb 27
Ultimate boom to bust market



1 2 162

Salvador Chavarria @schavarriaTexas · Feb 27
Does that mean you stay away from it?

1 62

FactorMembers @factor_members · Feb 27
I will trade it if an appropriate pattern develops. Being short UNG is a trade I wish I had pursued

1 70

Rashid Garuba @ARashidGaruba · Feb 27
Peter.. do you consider overhead supply in target ptojections..? Bitcoin? For example has prior highs in the 60 - 60.5K area.. thanks

1 1 207

FactorMembers @factor_members · Feb 27
BTC has only surged the deeper into overhead resistance we go. I am not sure we can consider the high 60s to be anything but phycological

1 2 223

Rashid Garuba @ARashidGaruba · Feb 27
Thanks.. market mood does alter support/resistance strength

1 53



TechB @Sangr32 · Feb 27

...

Great traders talk about going big when the right trade comes along which checks all their boxes.

Is there anything for you in just the charts that tells you to go big?



94



FactorMembers @factor_members · Feb 27

...

Absolutely -- there are times when all the boxes are checked. My days of going BIG are over through, although I did take about 140 BPs of risk totally in Nikkei. That for me is going big. In the old days going big was 500 BPs of risk



127



Long & Right @Ramblin_Rebel13 · Feb 27

...

Interesting you say that - I've found in my trading that the absolute best trades are fairly random, even if the chart is a super A+ setup. As a result, I have similar risk adding criteria for all setups, even if the setup is so beautiful it makes me cry



122



FactorMembers @factor_members · Feb 27

...

Yes, but the interesting thing about great trades is often the entry can be fine tuned. So, even though BP risk is constant compared to other trades, the R:r is much more asymmetrical



182



TechB @Sangr32 · Feb 27

...

Fine tuning entry means the ability to reduce the points risked without impacting the trade, does it?

If you could provide an example, it would be very helpful for understanding.

Thanks!



2.6K



ShangJun @y2theudi · Feb 28
Hi Peter - I follow your general guidance on stop losses. What do you recommend for dealing with gaps? I aim to set the stop loss at 5-10% below entry (while keeping in mind my total risk / portfolio) but often finding myself stopped out on a days open. Any advice? Thanks!

FactorMembers @factor_members · Feb 28
5 to 10% of the value of the stock/commodity??? Can you post an example on a chart or two so I better understand.

ShangJun @y2theudi · Feb 28
Thanks Peter. Bought DPST thinking it was a breakout of a bull flag. Followed by a major gap down after the hot CPI print. Probably should have gotten out before the news.



Rich_ard @rich_ard_d_d · Feb 28
U need to b rllly careful trading the 3x leverage ETFs becuz long term they suffer extreme decay. It is also imporntnt to view the context of the flag. Flags represent pullbacks in strongly trending mrkts. In this case, what u saw was a major decline in price.

FactorMembers @factor_members · Feb 28
Leveraged ETF are a sucker's game. What is really traded is not price, but volatility short term. In fact, as a trader I would far prefer a position trade of being short an ultra ETF on an asset class in a downtrend.

ShangJun @y2theudi · Feb 28
Thanks both. Appreciate being a part of this community!

Anthony @ACPCMT · Feb 27
Peter do you only implement the 3DTS rules once 70% of profit target has been reached?

FactorMembers @factor_members · Feb 27
It is also used if the triggering is to protect a trade against a bigger loss



Seb Abecasis @sebabecasis · Feb 27

...

Your #1 resource on reviewing trading P&L and improving expectancy?

1



1

99



FactorMembers @factor_members · Feb 27

...

Three things

Running Profit Factor -- I can calculate within minutes my YTD PF

Sequential Closed Trade NAV - YTD and worst YTD DD

Quarterly I roughly guess Pareto data YTD

1



2

123



Seb Abecasis @sebabecasis · Feb 27

...

Thanks. Any essays or books that are good on the topic?



31



Noam Littman @Raddoctr · Feb 28

...

I'm trying to find a good indicator on Trading View for ATR. There are so many. Is there one you would recommend?

1



73



FactorMembers @factor_members · Feb 28

...

Indicators

Technicals

ATR

Change the period from 14 to 30



90



Hugues @Alize778 · Feb 27

...

On gold... choosing GLD avoided a bull trap in December's breakout attempt. Why did you choose GLD unadjusted for fees, when the continuous contract, LBMA reference price, GLD adjusted for its 0.40% annual fee, had all made daily, weekly and monthly ATH in December?

1



182



FactorMembers @factor_members · Feb 27

...

I do not track LBMA. Just choosing GLD because it has cleaner chart and I am willing to own it because of the clarity of chart



1

150





Anthony @ACPCMT · Feb 27

...

Peter thoughts on my recent ZW Wheat trade? Noticed the rectangle on the weekly then zoomed into the daily and found a descending triangle breaking around the lower range of the rectangle, entered after a confirmed retest, entry and stop loss identified. Stopped out for 100% risk



1 ↻ 2 154 📌 ↗



FactorMembers @factor_members · Feb 27

...

Lots of complicated differences between continuation chart and individual contracts so I have not even considered Wheat as a trade

🗨 ↻ 2 149 📌 ↗



Defined Risk @the1Gert · Feb 27

...

When rolling a contract, how do you decide where to place the stop on the new contract?

🗨 2 ↻ 1 144 📌 ↗



FactorMembers @factor_members · Feb 27

...

It may mean that I take a larger than 30 BP loss on rolled into contract, but I must then look at the composite trade.

🗨 1 ↻ 1 166 📌 ↗



Defined Risk @the1Gert · Feb 27

...

thank you

🗨 ↻ 1 81 📌 ↗



Mahesh @mahesh2511 · Feb 27



How do you move stops as trade goes in your favour. Do you keep the 2 tranches stop separately. Can you do a video on stop mgt from start to finish of a trade please?



195



FactorMembers @factor_members · Feb 27



Often the stops are identical, but more aggressive on trading unit. I will try to remember to do a video



187



Michal Sablinski @SablinskiMichal · Feb 27



What would be your way of dealing with popcorn trades in cryptoland? I tried 3DTSR with mixed results, feel it's oversensitive somehow.



166



FactorMembers @factor_members · Feb 27



I am increasingly relying on simple moving averages to manage profitable trades. Using MAs will ALWAYS give back profits at trend turns, but that's unavoidable anyway



138



heffstarr @heffstar · Feb 27



What's your preference when it comes to MAs? How do its vary in something like BTC vs stocks?



27



William Tell @giggsoy · Feb 27



Any plans on coming to Switzerland



121



FactorMembers @factor_members · Feb 27



I love Switzerland. If I could have determined the country of birth, it would have been CHF. No plans.






127



 **Noam Littman** @Raddoctr · Feb 27 ...
If you had to name only one technical to follow what would it be?

 1    191  




 **FactorMembers**   @factor_members · Feb 27 ...
Price, price and price.

Just basic chart patterns, focused on horizontal patterns longer than 8 weeks but less than 26 weeks


   6  245  

 **Gustavo** @GustavoNaarez · Feb 27 ...
What rules to follow to take profits with parabolic advances?




 1   2  176  

 **FactorMembers**   @factor_members · Feb 27 ...
White knuckle. Just hang on for dear life


   5  177  

 **jogojo** @ghjogojo · Feb 27 ...
Peter thanks for all the knowledge you share. My question would be : what is the best chart to use for equities : dividend or not dividend adjusted?




 1   1  174  

 **FactorMembers**   @factor_members · Feb 27 ...
I look at both. Traders tend to use ex div charts, investors look at total return charts

   2  223  

 **EricWerner** @EricWerner · Feb 27 ...
When you are monitoring a classical pattern and the breakout almost immediately reaches the target price (before you have a chance to buy) is it too late? If you buy after it surges higher wouldn't the stop have to be so low increasing the potential loss?

 1  1  1  2.4K  

 **FactorMembers**   @factor_members · Feb 27 ...
I do not like swimming after the boat after it leaves the dock

   7  214  



suman kishore Choudh @skishore1676 · Feb 27

...

What is your routine to push automated orders and modify them? And how do you make yourself to stick to the routine?



159



FactorMembers @factor_members · Feb 27

...

My orders are all reviewed daily -- typically not changed, but reviewed. I modify based 80% on rules, 20% on discretionary judgement. Sticking to the routine is hard work requiring discipline.



135



jimitheneck @jimohare11 · Feb 27

...

Do you ever see Bitcoin as having trading in a channel since 2011? Last 3 bull runs it tagged the top of the channel, if that happened again this run we could see prices north of \$500k



188



FactorMembers @factor_members · Feb 27


...

Of course that is a possibility



164




 **salim harfouche**  @SalimHarfouche · Feb 27 ...
I admire your vocation for teaching us your knowledge 🙏


🗨️ ↻️ ❤️ 4 📊 125 📌 ⬆️

 **ShangJun** @y2theudi · Feb 27 ...
Would love to get your thoughts on XBI!

🗨️ ↻️ ❤️ 📊 44 📌 ⬆️

 **cryptoexplorer** @Realjusticefor1 · Feb 27 ...
Dear Peter, WTI seems stalled at the potential breakout level. Any views?

🗨️ ↻️ ❤️ 📊 68 📌 ⬆️

 **K BSAWHMZN** @bsawhmzn · Feb 28 ...
If you are still holding onto cotton, what will be your target, thank you

🗨️ ↻️ ❤️ 📊 19 📌 ⬆️


 **RJ** @n242sp · Feb 27 ...
TSLA target price in by March?

🗨️ ↻️ ❤️ 📊 34 📌 ⬆️




 **Tim G** @GTimG123 · Feb 27 ...
Hard to stay consistent with your approach during your early years? Did you have style drift and experiment? How long till you settled on classical charting?

🗨️ ↻️ ❤️ 📊 53 📌 ⬆️

More replies

 **Reid Schroeder**  @Reidm_ · Feb 27 ...
What percent of your total net worth is in Bitcoin as a long term hold?

🗨️ 2 ↻️ ❤️ 1 📊 94 📌 ⬆️

 **FactorMembers**   @factor_members · Feb 27 ...
I will have to work that out, but I am guessing somewhere between 10% and 15% with the advance now. I do not like this because swings in NAV get too wild

🗨️ ↻️ ❤️ 2 📊 59 📌 ⬆️

 **Adam Darwin** @HyperInvesting · Feb 27 ...
[@factor_members](#) Peter, do you consider this a cup & handle in Coinbase

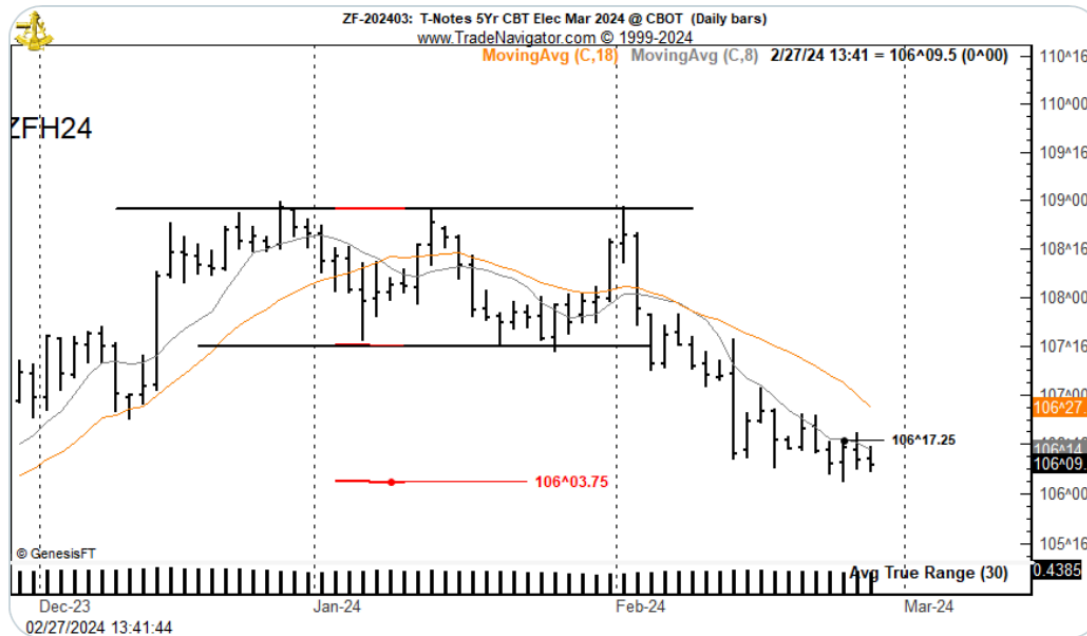




FactorMembers @factor_members · Feb 27



Flat 5-Yr Note now



FactorMembers @factor_members · Feb 27



Chasing breakouts completely destroys the reward to risk ratio.



EricWerner @EricWerner · Feb 27

Replying to @factor_members

When you are monitoring a classical pattern and the breakout almost immediately reaches the target price (before you have a chance to buy) is it too late? If you buy after it surges higher wouldn't the stop have to be so low increasing the potential loss?



FactorMembers @factor_members · Feb 27



Day in review.

BIG AND BORING in terms of trades. Just a day to hold. I did exit ZFH24. Of course, big day up in BTC.

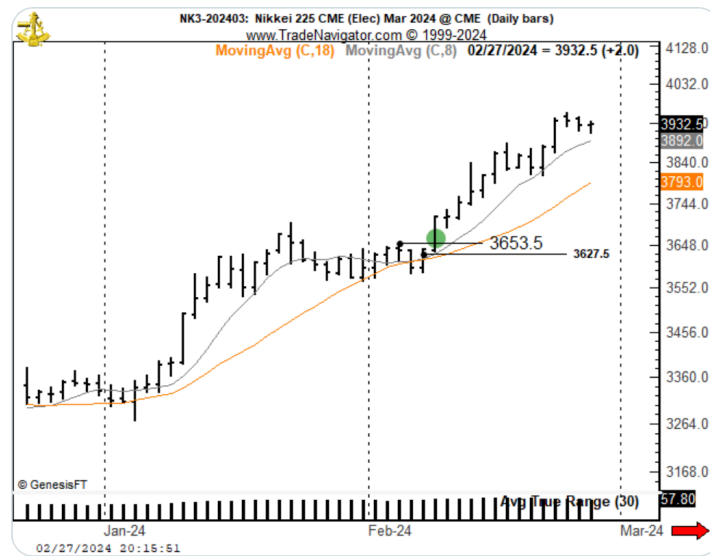
Even though I am only long a 50% position in BTC I am splitting it into two tranches for more flexibility in stop protection



FactorMembers @factor_members · Feb 27



Best examples come when there is pennant type continuation or when bigger pattern gets launched by smaller pattern. I bought the pennant in Nikkei on Feb 8 with a tight stop. Position size was almost double original long with same BP risk



TechB @Sangr32 · Feb 27

Replying to @factor_members and @Ramblin_Rebel13

Fine tuning entry means the ability to reduce the points risked without impacting the trade, does it?

If you could provide an example, it would be very helpful for understanding. ...