

Factor Members Private Twitter Feed - March 6, 2024



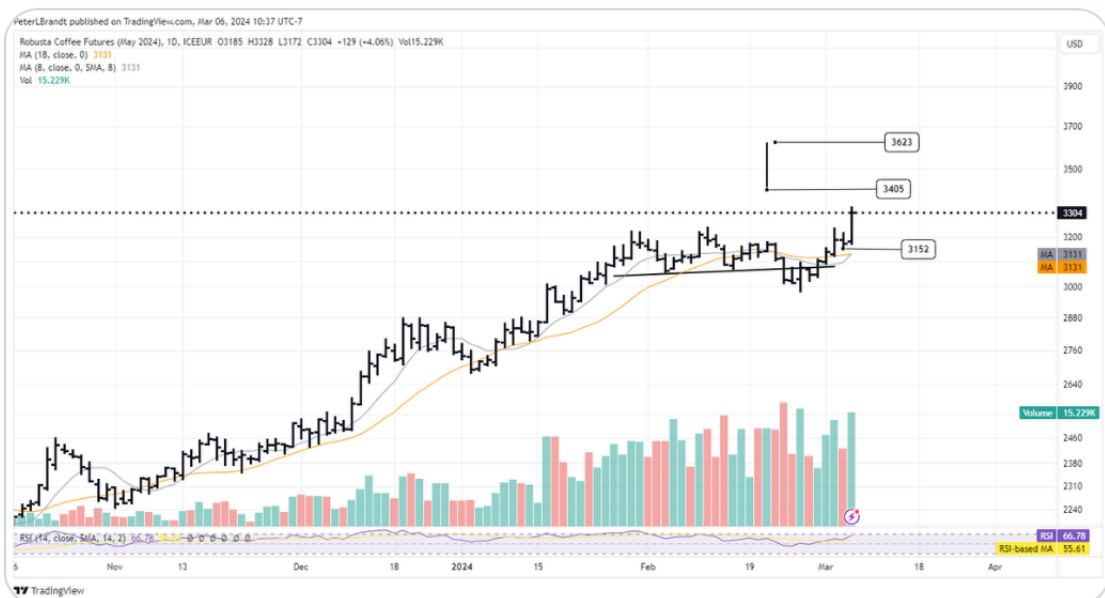
FactorMembers @factor_members · Mar 6

The 3DTSR never fully developed (set up day did not occur) so still long 50%. Rather than cover at target nearby I will trail a stop \$N225M_F
Actually, yesterday was a foot shot day.



FactorMembers @factor_members · Mar 6

Long (only 50%) RCK24 DK24 LCFK24 with stop below Tuesday low
I will use a 2X target from the H&S failure as shown





FactorMembers @factor_members · Mar 6

...

Update on trading with weekly charts

For those following the trades I have taken (not in Prop Account) based on weekly charts, here are current stop out points

Cotton



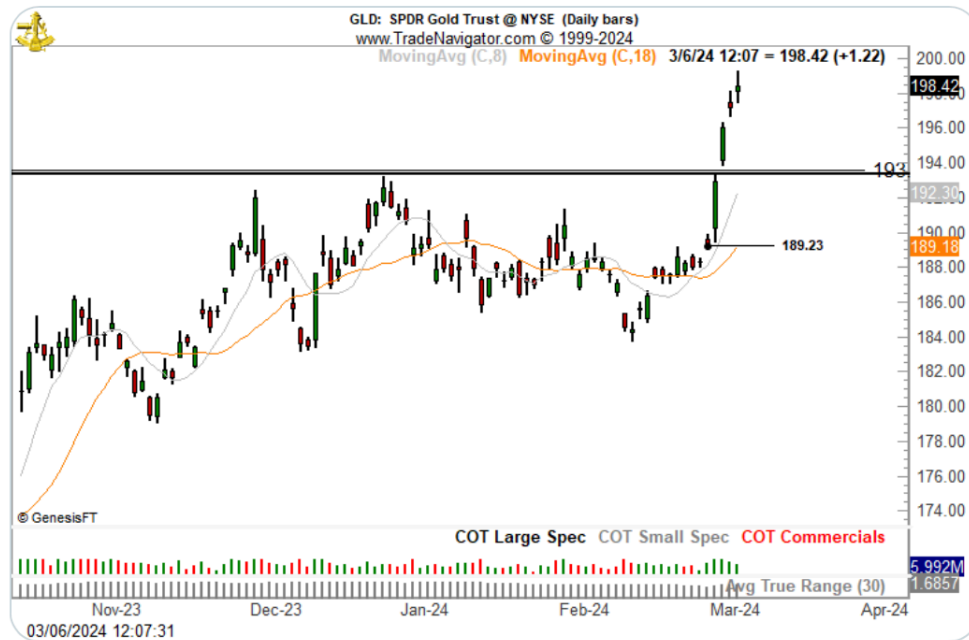
1 16 1.7K



FactorMembers @factor_members · Mar 6

...

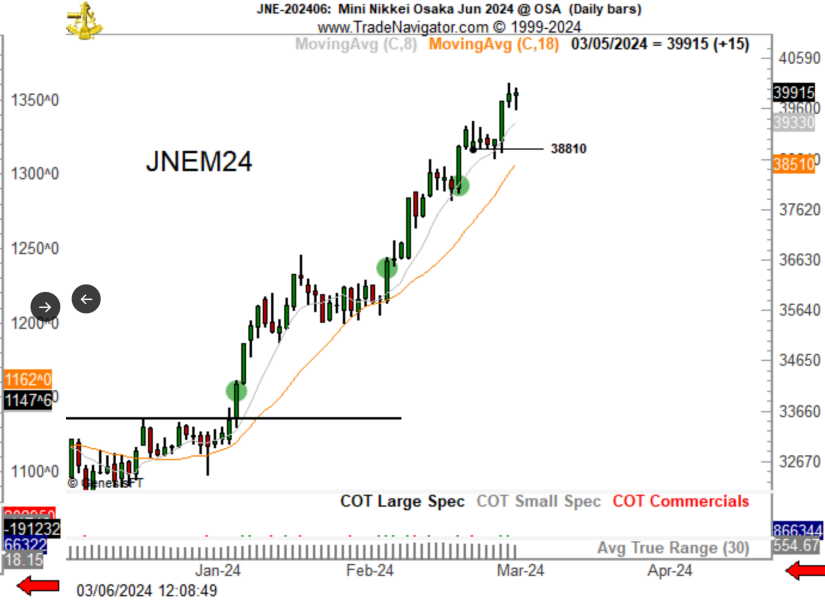
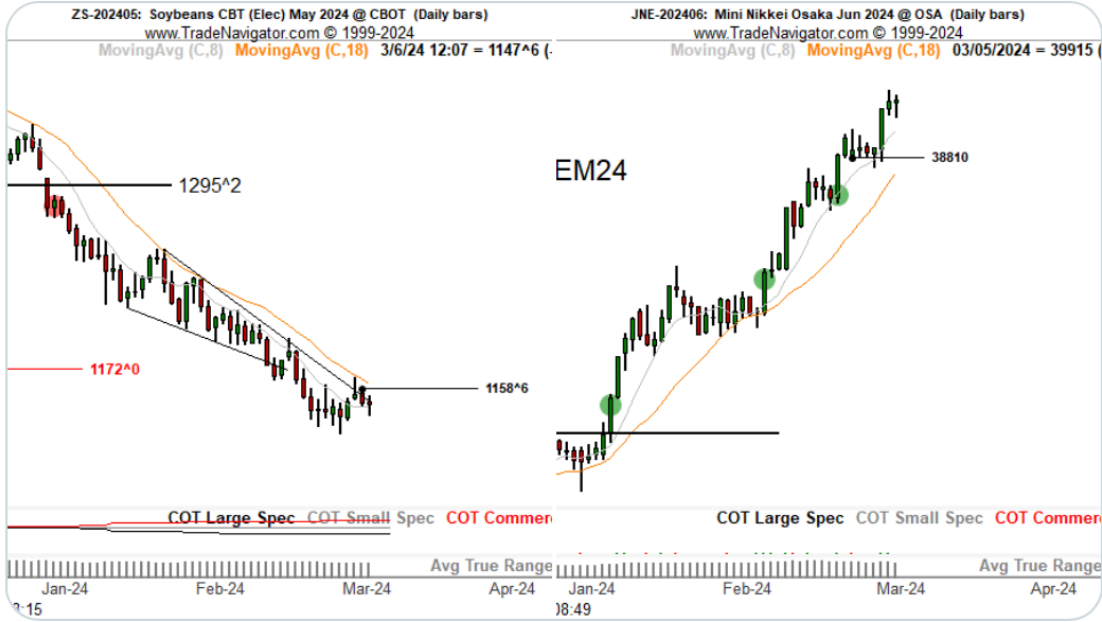
GLD



1 11 996



Soybeans and Nikkei





FactorMembers @factor_members · Mar 6



Day in review:

Boring, except additional confirmation of bull market in Gold
I bought the open in London Cocoa -- pattern is a H&S failure
Trigger was move above Feb 21 high



FactorMembers @factor_members · Mar 6



Chart of tradeable interest - Soybean Meal \$ZM_F

Largest Commercial net longs and Hedge Fund net shorts **EVER IN HISTORY**

An explosion waiting for a match to be lit
Note channel

