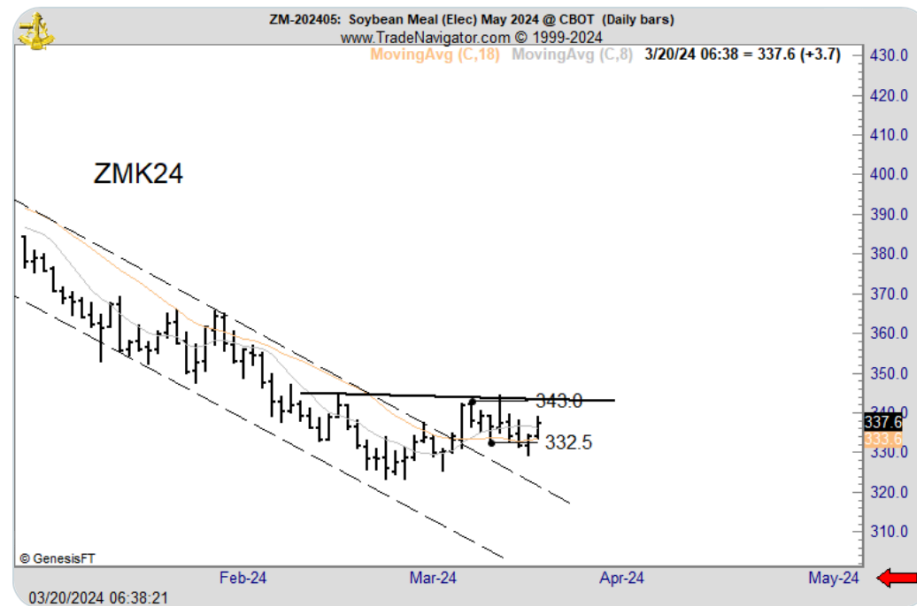


# Factor Members Private Twitter Feed - March 20, 2024



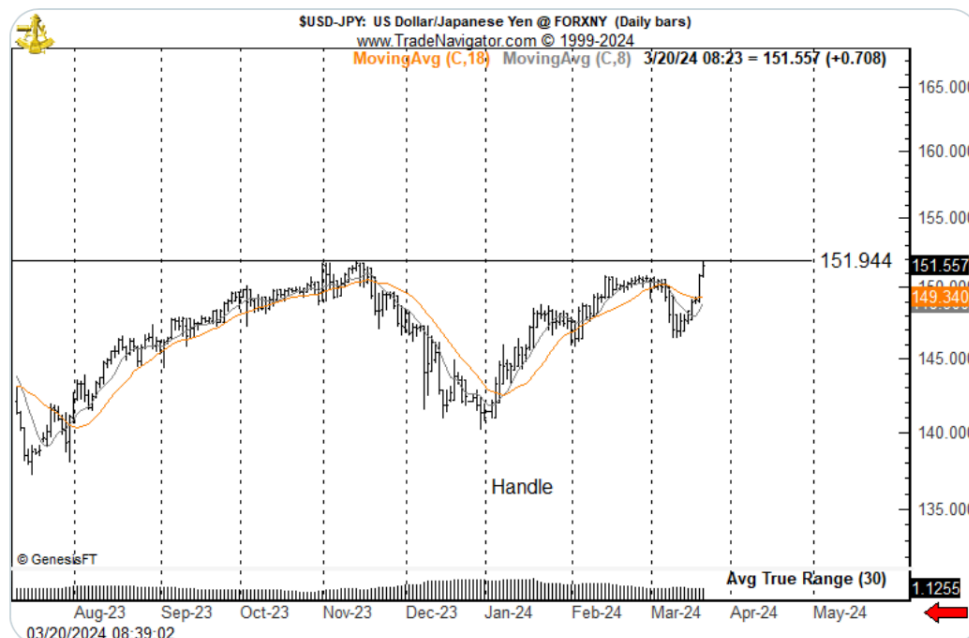
**FactorMembers** @factor\_members · Mar 20

Comment on Soybean Meal  
 Small H&S bottom has not yet been completed, but is still a possibility.  
 Decline and reversal day on Tuesday had the appearance of a bear trap  
 \$ZM\_F ZMK24



**FactorMembers** @factor\_members · Mar 20

Just looking at the period since Nov 2023 (perhaps as a Cup and Handle construction) the adjusted buy stop ATR for \$USDJPY is about .68





FactorMembers @factor\_members · Mar 20

Unlike the "good ole days," I rarely take anticipatory positions. I have taken one in Meal \$ZMK24  
Will add to trade  
Will look for 1X and 2X targets



FactorMembers @factor\_members · Mar 20

I like the milling wheat chart

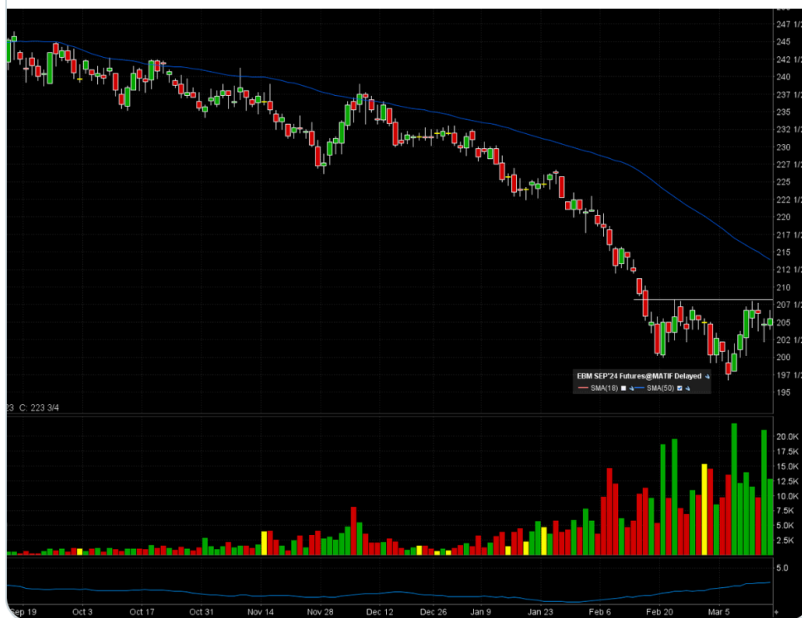


Peter @pingkind · Mar 15

Sept. Matif wheat is on my screen and it looks interesting. @raciops @factor\_members

Question: Sept wheat isn't popular to trade here in North America, is it different in Europe? The volume suggests that U is not worse than Z fo...

[Show more](#)



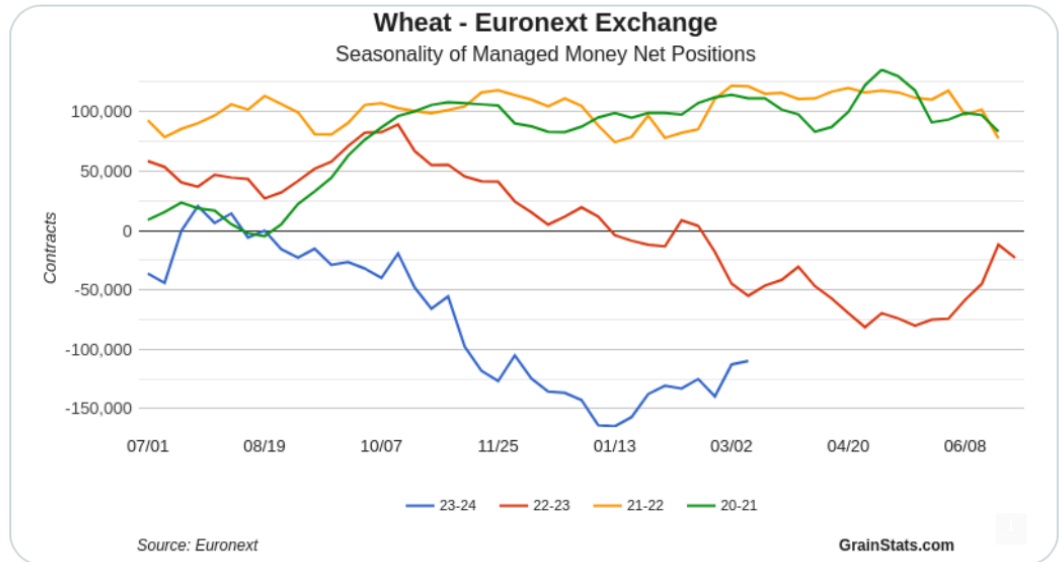


FactorMembers @factor\_members · Mar 20



### European Milling Wheat

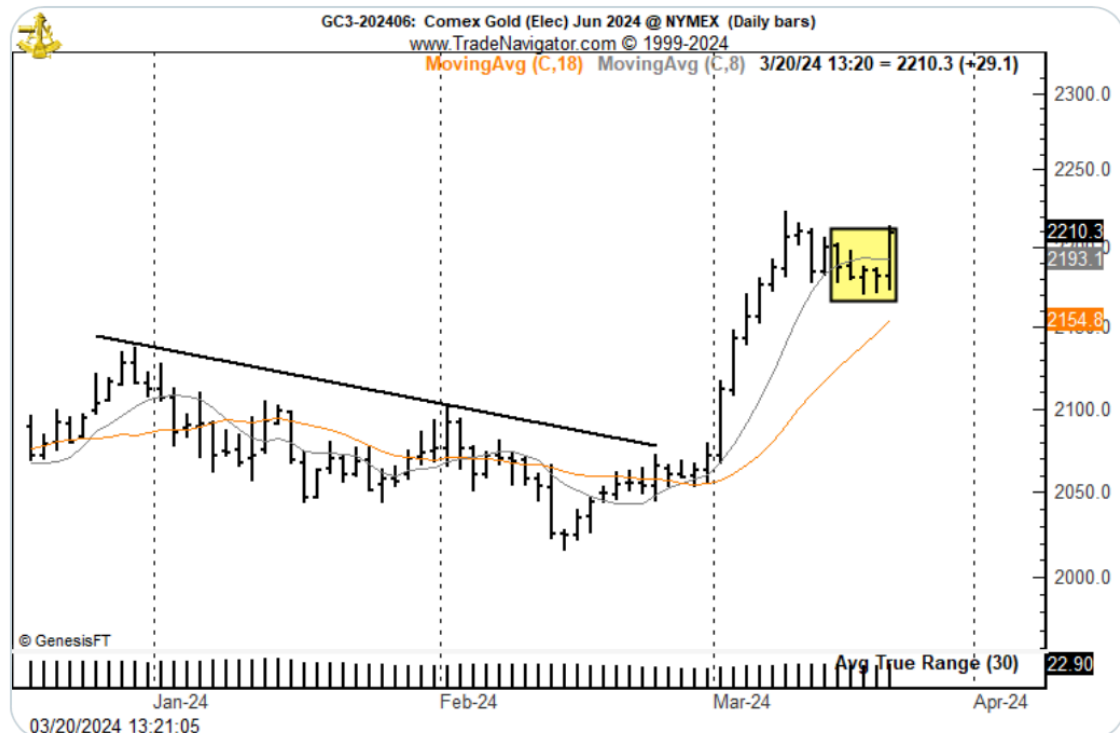
Commercials are long. Hedge funds are shortest they have been in a few years



FactorMembers @factor\_members · Mar 20



### Hikkake buy signal in Gold today \$GCF

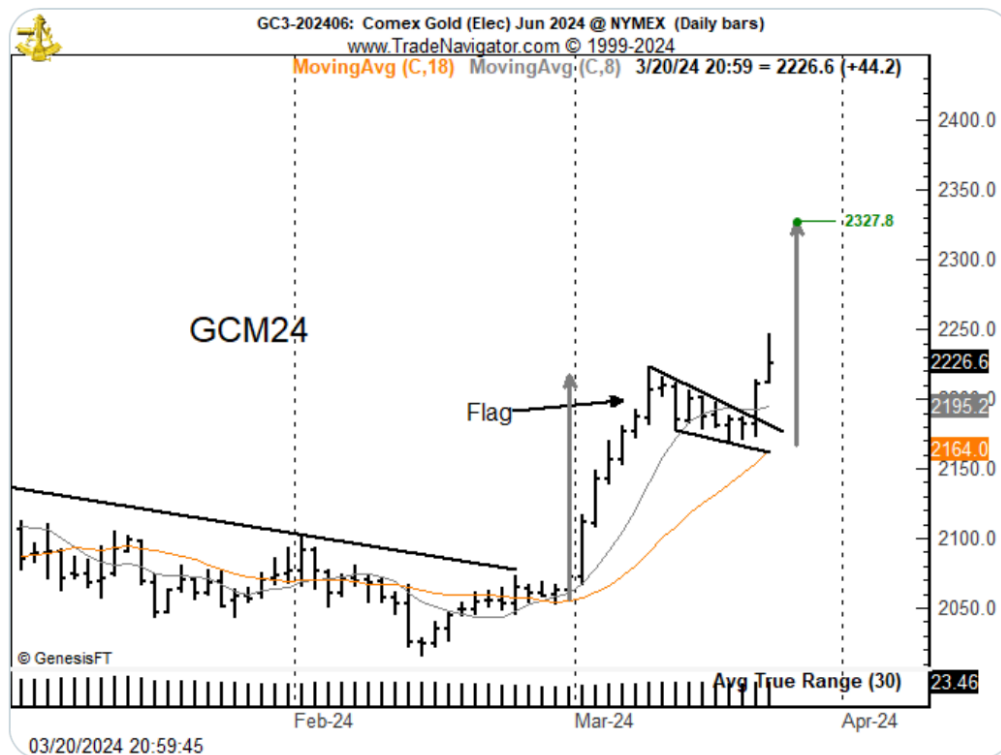




FactorMembers @factor\_members · Mar 20

...

Day in review, Mar 20, 2024 -- sorry, I am running late today on everything Gold chart flashed an hikkake and flag buy signal today. I add to my position in futures



22

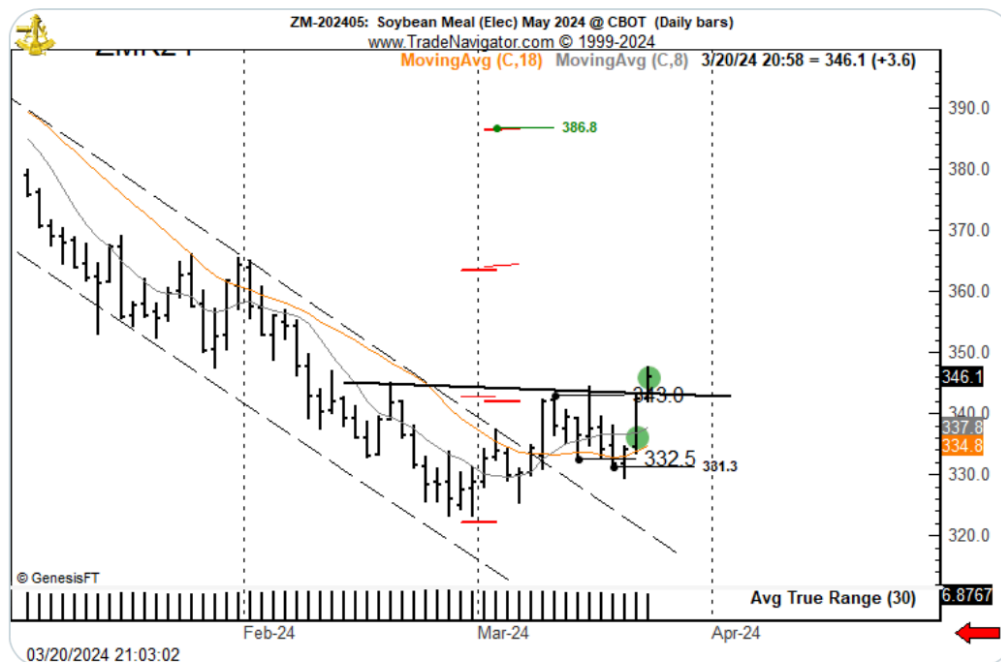
1.2K



FactorMembers @factor\_members · Mar 20

...

Soybean Meal completed an anticipatory buy signal coming off the bear trap yesterday with very bullish COT profile.





S&Ps completed a small continuation pennant. I am flat.

