

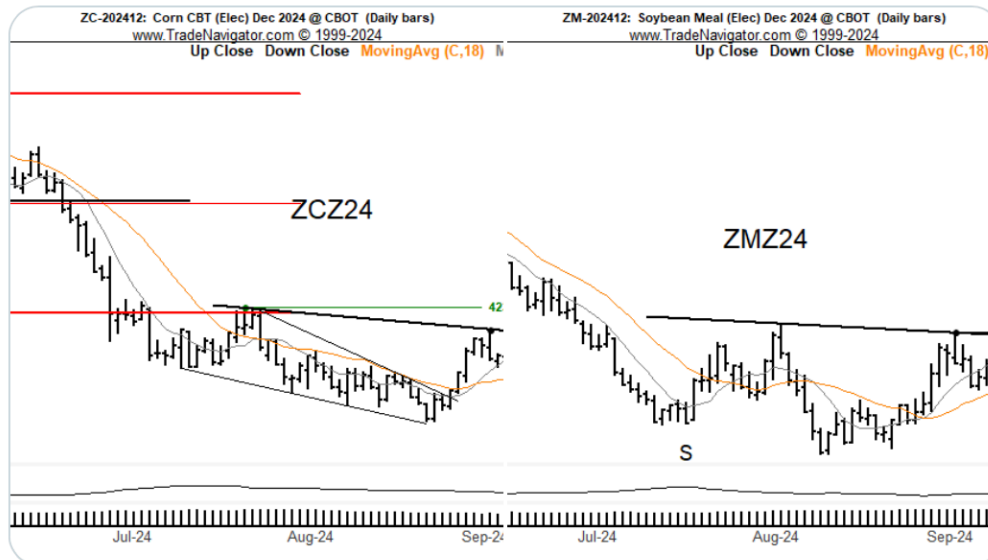
Factor Members Private Twitter Feed - September 24, 2024



FactorMembers @factor_members · Sep 24



Charts of tradeable interest
40% of ATRs almost triggered today in Corn and Meal



FactorMembers @factor_members · Sep 24



I have evolved and re-evolved over the years in terms of these finer nuances of trading. The important thing to me is that I have remained chart-based and risk adverse



boilermaker @boilerm2 · Sep 24

Replying to @factor_members

You no longer use closing prices for measured move targets? I remember in one of the very old factor reports you mentioned about it.